

## CMTR2 RABBIT PAB

**Cat.#:** S219400

**Product Name:** Anti-CMTR2 Rabbit Polyclonal Antibody

**Synonyms:** AFT; MTr2; HMTr2; FTSJD1

**UNIPROT ID:** Q8IYT2 (Gene Accession - BC035005 )

**Background:** S-adenosyl-L-methionine-dependent methyltransferase that mediates mRNA cap2 2'-O-ribose methylation to the 5'-cap structure of mRNAs. Methylates the ribose of the second nucleotide of a m7GpppG-capped mRNA and small nuclear RNA (snRNA) (cap0) to produce m7GpppRmpNm (cap2). Recognizes a guanosine cap on RNA independently of its N7 methylation status. Display cap2 methylation on both cap0 and cap1. Displays a preference for cap1 RNAs.

**Immunogen:** Fusion protein of human CMTR2

**Applications:** ELISA, IHC

**Recommended Dilutions:** IHC: 50-200; ELISA: 5000-10000

**Host Species:** Rabbit

**Clonality:** Rabbit Polyclonal

**Isotype:** Immunogen-specific rabbit IgG

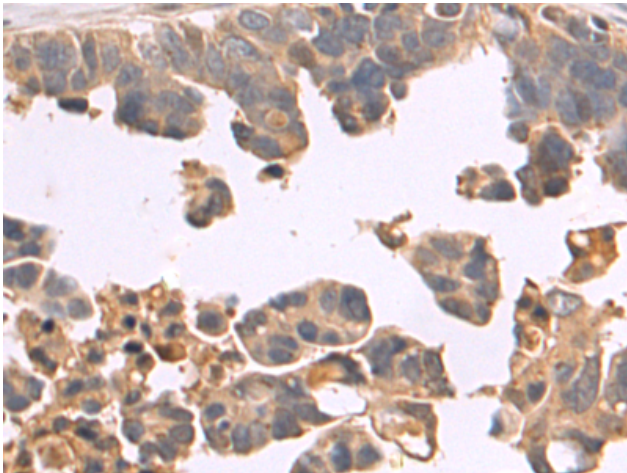
**Purification:** Antigen affinity purification

**Species Reactivity:** Human

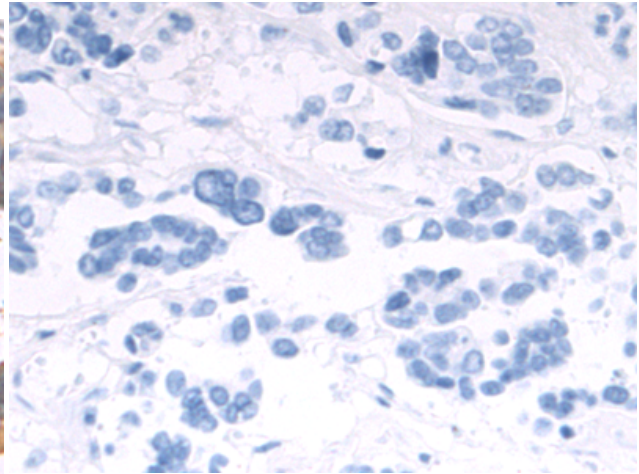
**Constituents:** PBS (without Mg<sup>2+</sup> and Ca<sup>2+</sup>), pH 7.4, 150 mM NaCl, 0.05% Sodium Azide and 40% glycerol

**Research Areas:** Cell Biology

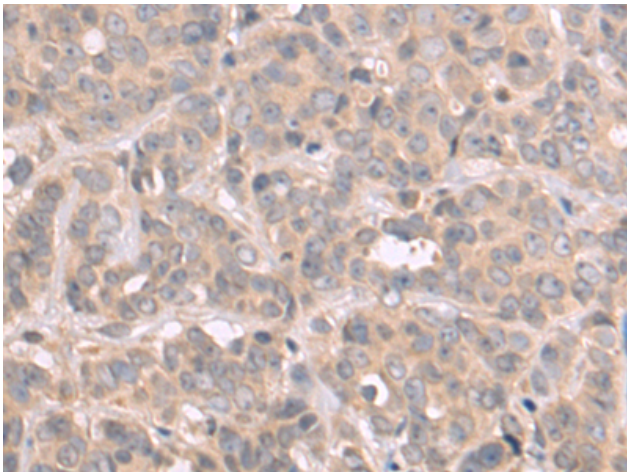
**Storage & Shipping:** Store at -20°C. Avoid repeated freezing and thawing



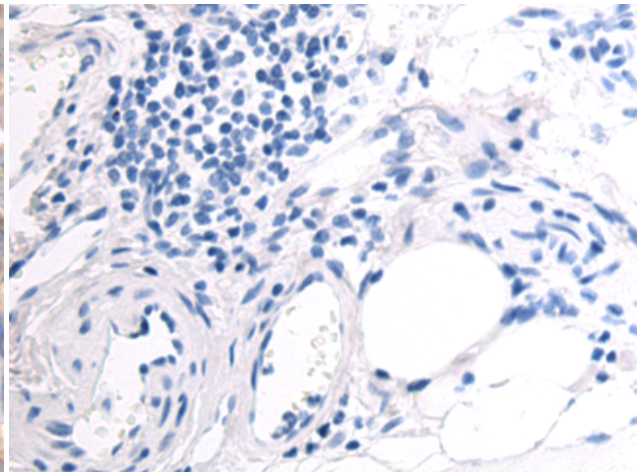
Immunohistochemistry analysis of paraffin embedded Human colorectal cancer tissue using 219400 (CMTR2 Antibody) at a dilution of 1/80 (Cytoplasm).



In comparison with the IHC on the left, the same paraffin-embedded Human colorectal cancer tissue is first treated with the fusion protein and then with 219400 (Anti-CMTR2 Antibody) at dilution 1/80.



The image on the left is immunohistochemistry of paraffin-embedded Human breast cancer tissue using 219400 (Anti-CMTR2 Antibody) at a dilution of 1/80.



In comparison with the IHC on the left, the same paraffin-embedded Human breast cancer tissue is first treated with fusion protein and then with D226767 (Anti-CMTR2 Antibody) at dilution 1/80.