

CMTM8 RABBIT PAB

Cat.#: N225047

Product Name: Anti-CMTM8 Rabbit pAb

Synonyms: CMTM8; CKLFSF8; CKLF-like MARVEL transmembrane domain-containing protein 8; Chemokine-like factor superfamily member 8

UNIPROT ID: Q8IZV2

Background: This gene belongs to the chemokine-like factor gene superfamily, a novel family that is similar to the chemokine and the transmembrane 4 superfamilies. This gene is one of several chemokine-like factor genes located in a cluster on chromosome 3. This gene is widely expressed in many tissues, but the exact function of the encoded protein is unknown.

Immunogen: The antiserum was produced against synthesized peptide derived from the Internal region of human CMTM8. AA range:101-150

Applications: WB,IHC-P,ELISA

Recommended Dilutions: WB: 1/500-1/1000 IHC: 1/50-1/100 ELISA: 1/10000

Host Species: Rabbit

Clonality: Rabbit Polyclonal

Clone ID: -

MW: Calculated MW: 20 kDa; Observed MW: 20 kDa

Isotype: IgG

Purification: Affinity Purified

Species Reactivity: Human

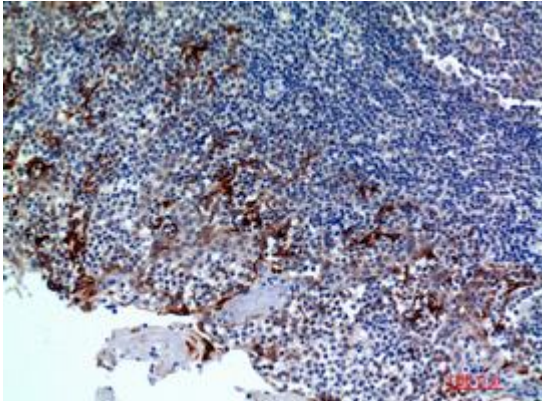
Conjugation: Unconjugated

Modification: Unmodified

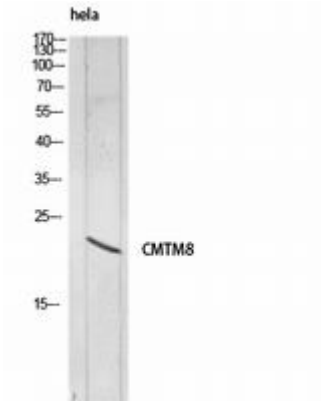
Constituents: PBS (without Mg²⁺ and Ca²⁺), pH 7.3 containing 50% glycerol, 0.5% BSA and 0.02% sodium azide

Research Areas: Signal Transduction

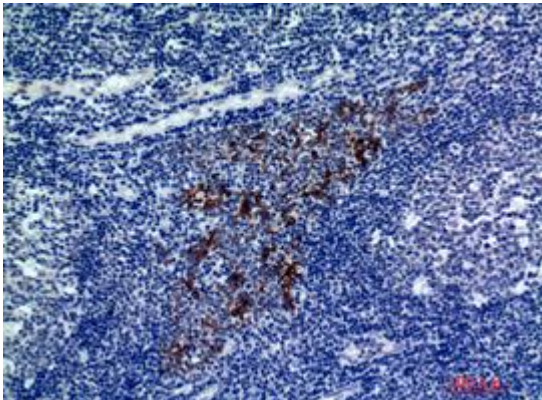
Storage & Shipping: Store at -20°C. Avoid repeated freezing and thawing



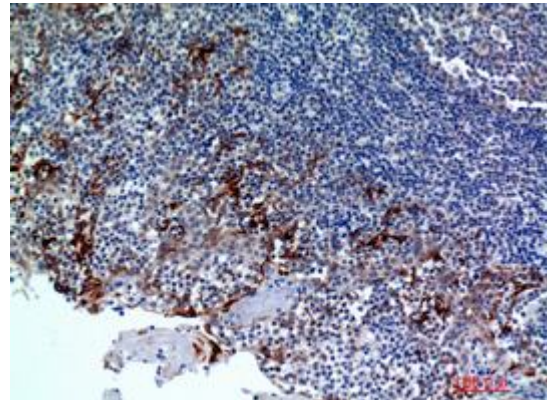
Immunohistochemistry analysis of paraffin-embedded Human tonsils using CMTM8 antibody. High-pressure and temperature Sodium Citrate pH 6.0 was used for antigen retrieval.



Western blot analysis of CMTM8 in hela lysates using CMTM8 antibody.



Immunohistochemistry analysis of paraffin-embedded Human tonsils using CMTM8 antibody. High-pressure and temperature Sodium Citrate pH 6.0 was used for antigen retrieval.



Immunohistochemistry analysis of paraffin-embedded Human tonsils2 using CMTM8 antibody. High-pressure and temperature Sodium Citrate pH 6.0 was used for antigen retrieval.