

CMTM3 RABBIT PAB

Cat.#: S219804

Product Name: Anti-CMTM3 Rabbit Polyclonal Antibody

Synonyms: BNAS2, CKLFSF3

UNIPROT ID: Q96MX0 (Gene Accession - NP_653202)

Background: This gene belongs to the chemokine-like factor gene superfamily, a novel family that is similar to the chemokine and the transmembrane 4 superfamilies of signaling molecules. This gene is one of several chemokine-like factor genes located in a cluster on chromosome 16. Alternatively spliced transcript variants containing different 5' UTRs, but encoding the same protein, have been identified. [

Immunogen: Synthetic peptide of human CMTM3

Applications: ELISA, WB, IHC

Recommended Dilutions: IHC: 25-100;WB: 500-2000;ELISA: 1000-5000

Host Species: Rabbit

Clonality: Rabbit Polyclonal

Isotype: Immunogen-specific rabbit IgG

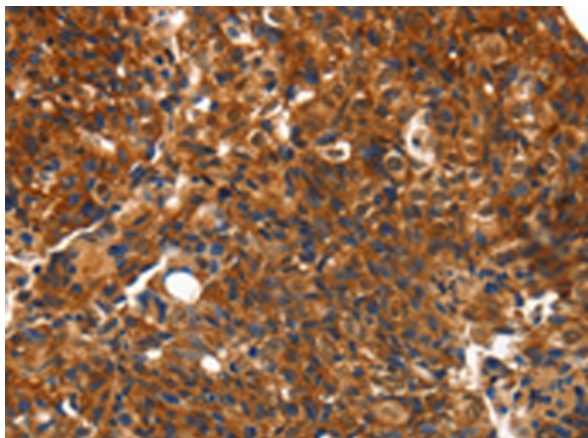
Purification: Antigen affinity purification

Species Reactivity: Human, Mouse

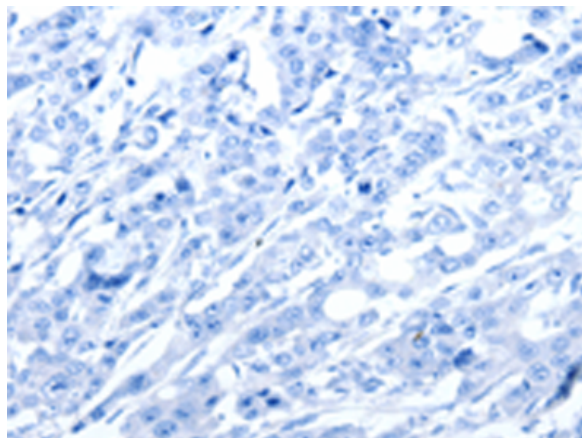
Constituents: PBS (without Mg²⁺ and Ca²⁺), pH 7.4, 150 mM NaCl, 0.05% Sodium Azide and 40% glycerol

Research Areas: Immunology

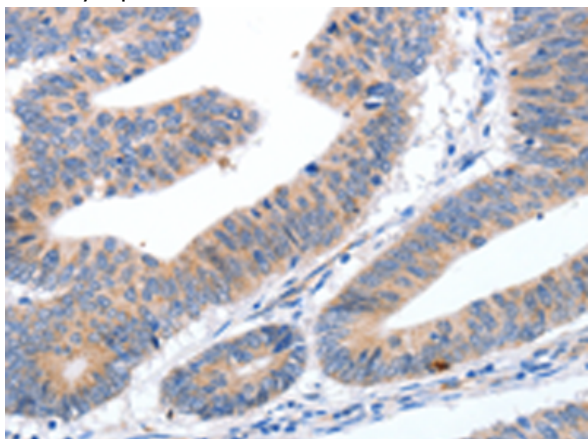
Storage & Shipping: Store at -20°C. Avoid repeated freezing and thawing



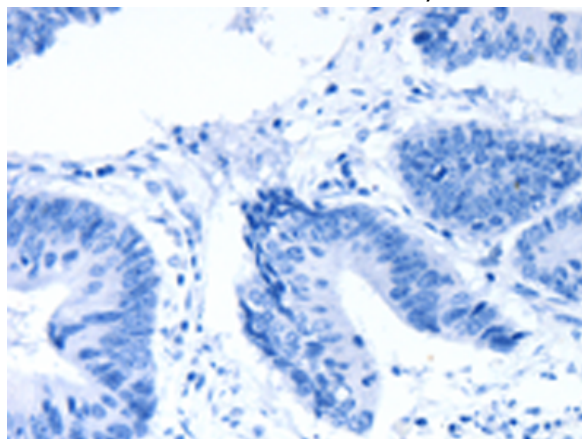
Immunohistochemistry analysis of paraffin embedded Human breast cancer tissue using 219804(CMTM3 Antibody) at a dilution of 1/10(Cytoplasm).



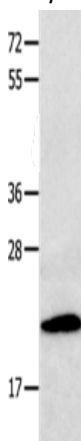
In comparison with the IHC on the left, the same paraffin-embedded Human breast cancer tissue is first treated with the synthetic peptide and then with 219804(Anti-CMTM3 Antibody) at dilution 1/10.



The image on the left is immunohistochemistry of paraffin-embedded Human colon cancer tissue using 219804(Anti-CMTM3 Antibody) at a dilution of 1/10.



In comparison with the IHC on the left, the same paraffin-embedded Human colon cancer tissue is first treated with synthetic peptide and then with D260398(Anti-CMTM3 Antibody) at dilution 1/10.



Gel: 10+12%SDS-PAGE, Lysate: 40 µg;
Lane: Human fetal kidney tissue;
Primary antibody: 219804(CMTM3 Antibody) at dilution 1/200;
Secondary antibody: Goat anti rabbit IgG at 1/8000 dilution;
Exposure time: 1 minute



Product Description

Pioneering GTPase and Oncogene Product Development since 2010
