

CMTM2 RABBIT PAB

Cat.#: S216425

Product Name: Anti-CMTM2 Rabbit Polyclonal Antibody

Synonyms: CKLFSF2

UNIPROT ID: Q8TAZ6 (Gene Accession - BC025354)

Background: This gene belongs to the chemokine-like factor gene superfamily, a novel family that links the chemokine and the transmembrane 4 superfamilies of signaling molecules. The protein encoded by this gene may play an important role in testicular development.

Immunogen: Fusion protein of human CMTM2

Applications: ELISA, IHC

Recommended Dilutions: IHC: 50-200; ELISA: 1000-5000

Host Species: Rabbit

Clonality: Rabbit Polyclonal

Isotype: Immunogen-specific rabbit IgG

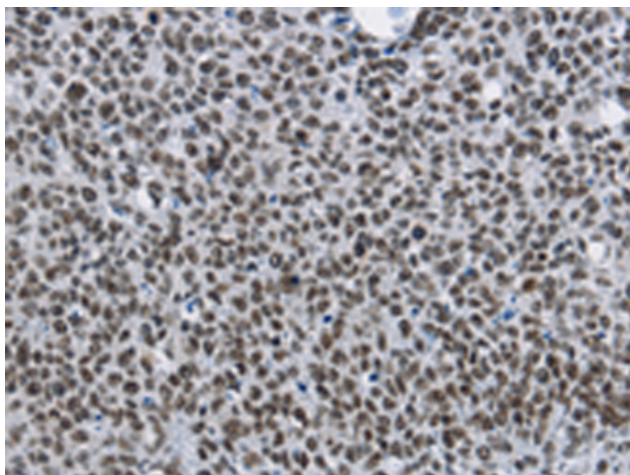
Purification: Antigen affinity purification

Species Reactivity: Human

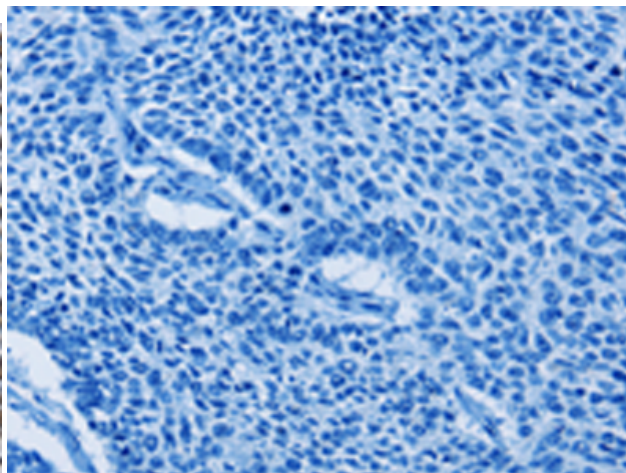
Constituents: PBS (without Mg²⁺ and Ca²⁺), pH 7.4, 150 mM NaCl, 0.05% Sodium Azide and 40% glycerol

Research Areas: Stem Cells

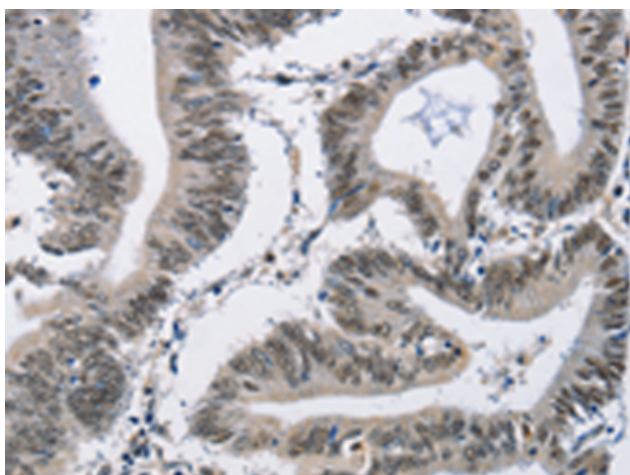
Storage & Shipping: Store at -20°C. Avoid repeated freezing and thawing



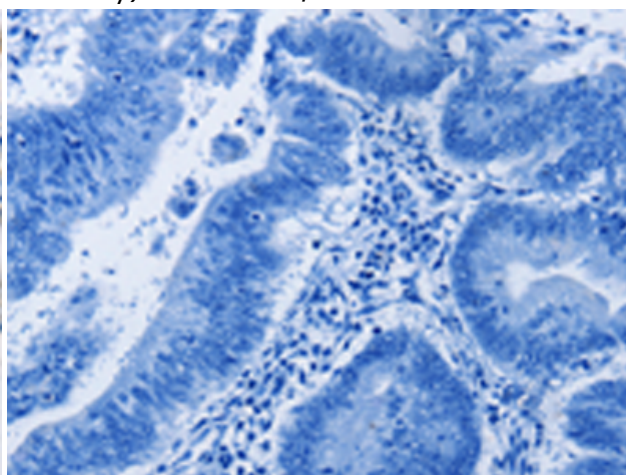
Immunohistochemistry analysis of paraffin embedded Human lung cancer tissue using 216425 (CMTM2 Antibody) at a dilution of 1/60 (Nucleus).



In comparison with the IHC on the left, the same paraffin-embedded Human lung cancer tissue is first treated with the fusion protein and then with 216425 (Anti-CMTM2 Antibody) at dilution 1/60.



The image on the left is immunohistochemistry of paraffin-embedded Human colon cancer tissue using 216425 (Anti-CMTM2 Antibody) at a dilution of 1/60.



In comparison with the IHC on the left, the same paraffin-embedded Human colon cancer tissue is first treated with fusion protein and then with D220430 (Anti-CMTM2 Antibody) at dilution 1/60.