

CMC1 RABBIT PAB

Cat.#: S219429

Product Name: Anti-CMC1 Rabbit Polyclonal Antibody

Synonyms: C3orf68

UNIPROT ID: Q7Z7K0 (Gene Accession - BC052644)

Background: Component of the MITRAC (mitochondrial translation regulation assembly intermediate of cytochrome c oxidase complex) complex that regulates cytochrome c oxidase assembly.

Immunogen: Fusion protein of human CMC1

Applications: ELISA, WB, IHC

Recommended Dilutions: IHC: 100-200;WB: 1000-5000;ELISA: 5000-10000

Host Species: Rabbit

Clonality: Rabbit Polyclonal

Isotype: Immunogen-specific rabbit IgG

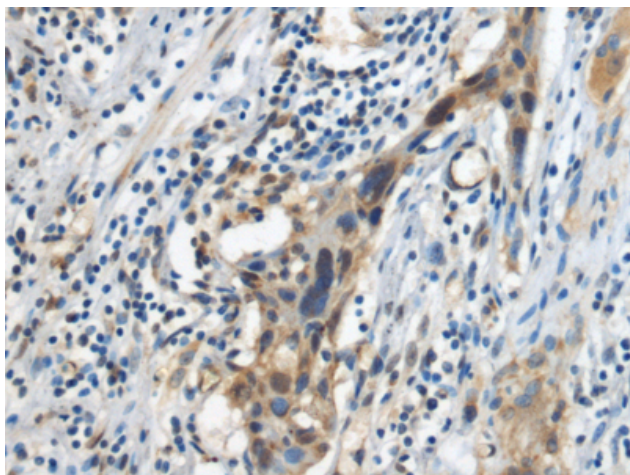
Purification: Antigen affinity purification

Species Reactivity: Human, Mouse

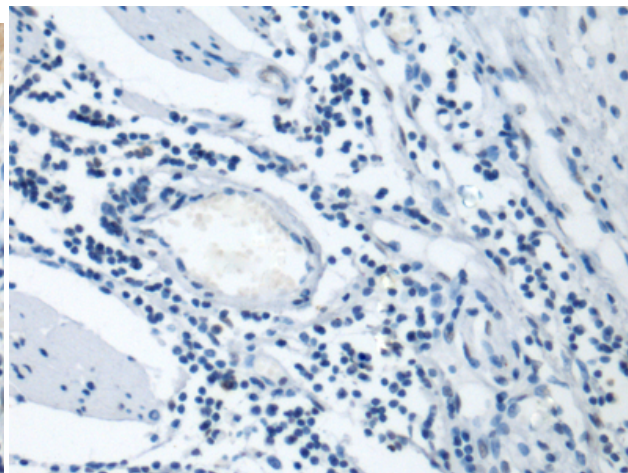
Constituents: PBS (without Mg²⁺ and Ca²⁺), pH 7.4, 150 mM NaCl, 0.05% Sodium Azide and 40% glycerol

Research Areas: Metabolism

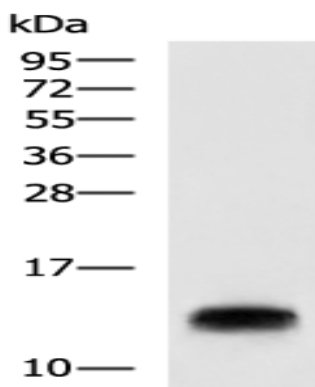
Storage & Shipping: Store at -20°C. Avoid repeated freezing and thawing



Immunohistochemistry analysis of paraffin embedded Human esophagus cancer tissue using 219429 (CMC1 Antibody) at a dilution of 1/100 (Cytoplasm).



In comparison with the IHC on the left, the same paraffin-embedded Human esophagus cancer tissue is first treated with the fusion protein and then with 219429 (Anti-CMC1 Antibody) at dilution 1/100.



Gel: 12% SDS-PAGE, Lysate: 40 μ g;
Lane: Human liver tissue lysate;
Primary antibody: 219429 (CMC1 Antibody) at dilution 1/1200;
Secondary antibody: HRP-conjugated Goat anti rabbit IgG at 1/5000 dilution;
Exposure time: 1 minute