

## CLU/APO J RABBIT PAB

**Cat.#:** S218423

**Product Name:** Anti-CLU/APO J Rabbit Polyclonal Antibody

**Synonyms:** CLI; AAG4; APOJ; CLU1; CLU2; KUB1; SGP2; APO-J; SGP-2; SP-40; TRPM2; TRPM-2; NA1/NA2

**UNIPROT ID:** P10909 (Gene Accession - BC010514 )

**Background:** The protein encoded by this gene is a secreted chaperone that can under some stress conditions also be found in the cell cytosol. It has been suggested to be involved in several basic biological events such as cell death, tumor progression, and neurodegenerative disorders. Alternate splicing results in both coding and non-coding variants.

**Immunogen:** Fusion protein of human CLU/APO J

**Applications:** ELISA, WB, IHC

**Recommended Dilutions:** IHC: 30-150;WB: 200-1000;ELISA: 5000-10000

**Host Species:** Rabbit

**Clonality:** Rabbit Polyclonal

**Isotype:** Immunogen-specific rabbit IgG

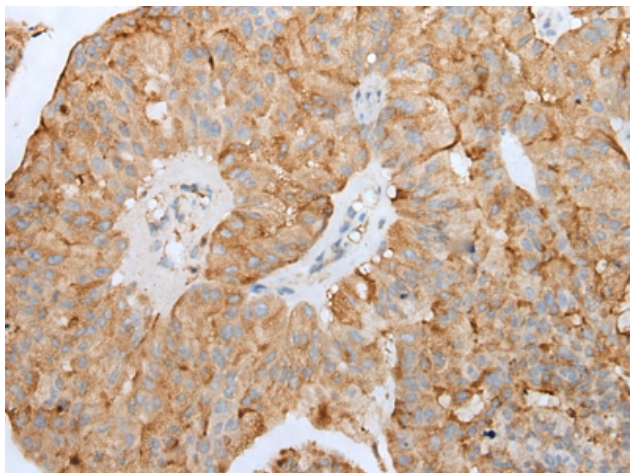
**Purification:** Antigen affinity purification

**Species Reactivity:** Human, Rat

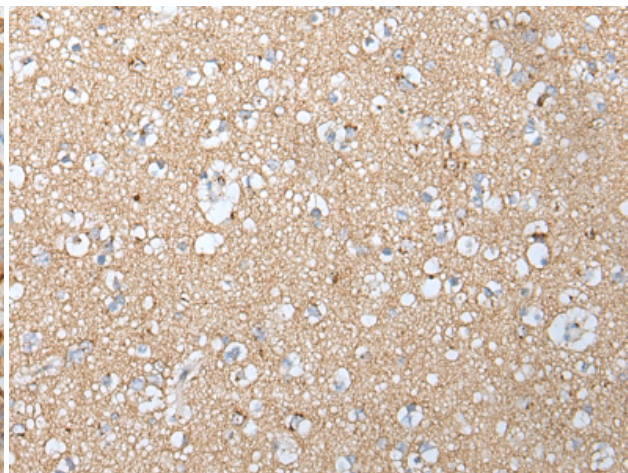
**Constituents:** PBS (without Mg<sup>2+</sup> and Ca<sup>2+</sup>), pH 7.4, 150 mM NaCl, 0.05% Sodium Azide and 40% glycerol

**Research Areas:** Metabolism, Signal Transduction, Cancer, Cardiovascular, Immunology

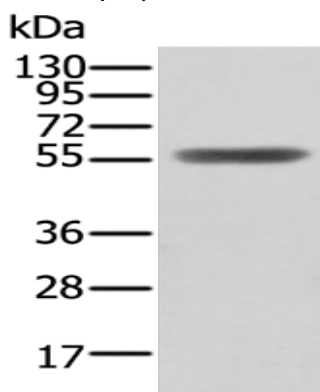
**Storage & Shipping:** Store at -20°C. Avoid repeated freezing and thawing



Immunohistochemistry analysis of paraffin-embedded Human liver cancer tissue using 218423(CLU/APO J Antibody) at a dilution of 1/45(Cytoplasm).



Immunohistochemistry analysis of paraffin-embedded Human brain tissue using 218423(Anti-CLU/APO J Antibody) at a dilution of 1/45.



Gel: 8%SDS-PAGE, Lysate: 40 µg;  
Lane: Human fetal brain tissue lysate;  
Primary antibody: 218423(CLU/APO J Antibody) at dilution 1/400;  
Secondary antibody: Goat anti rabbit IgG at 1/8000 dilution;  
Exposure time: 30 seconds