

## CLTB RABBIT PAB

**Cat.#:** S219260

**Product Name:** Anti-CLTB Rabbit Polyclonal Antibody

**Synonyms:** LCB

**UNIPROT ID:** P09497 (Gene Accession - BC006332)

**Background:** Clathrin is a large, soluble protein composed of heavy and light chains. It functions as the main structural component of the lattice-type cytoplasmic face of coated pits and vesicles which entrap specific macromolecules during receptor-mediated endocytosis. This gene encodes one of two clathrin light chain proteins which are believed to function as regulatory elements. Alternative splicing results in multiple transcript variants.

**Immunogen:** Fusion protein of human CLTB

**Applications:** ELISA, WB, IHC

**Recommended Dilutions:** IHC: 50-200;WB: 500-2000;ELISA: 5000-10000

**Host Species:** Rabbit

**Clonality:** Rabbit Polyclonal

**Isotype:** Immunogen-specific rabbit IgG

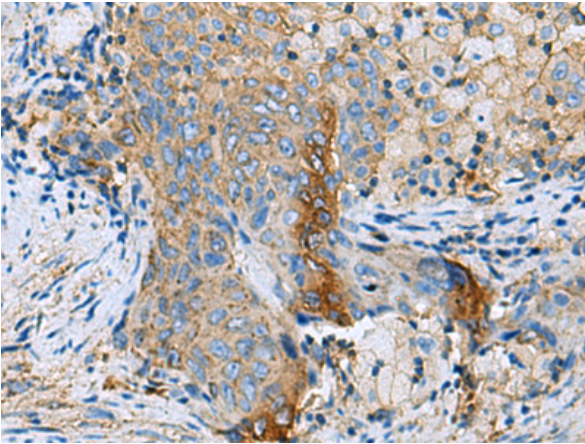
**Purification:** Antigen affinity purification

**Species Reactivity:** Human, Mouse

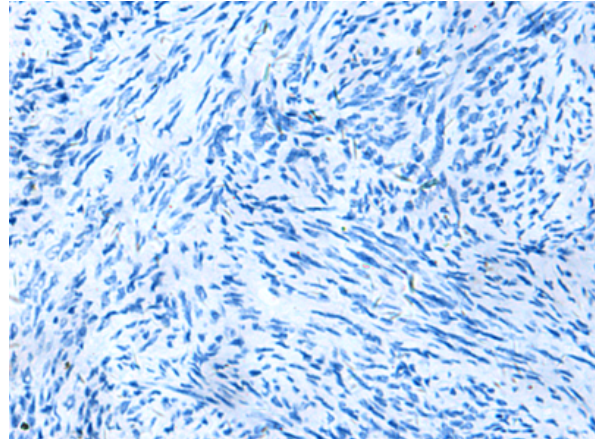
**Constituents:** PBS (without Mg<sup>2+</sup> and Ca<sup>2+</sup>), pH 7.4, 150 mM NaCl, 0.05% Sodium Azide and 40% glycerol

**Research Areas:** Signal Transduction, Neuroscience

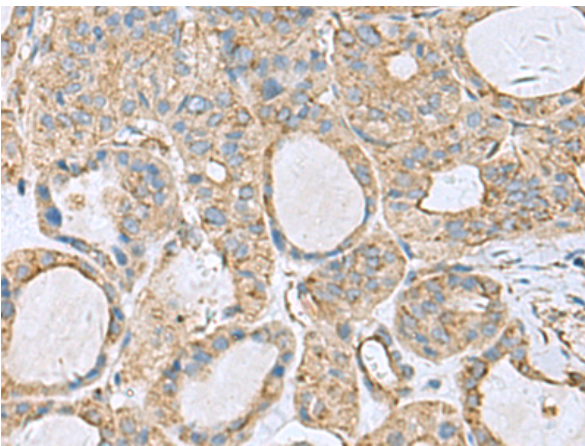
**Storage & Shipping:** Store at -20°C. Avoid repeated freezing and thawing



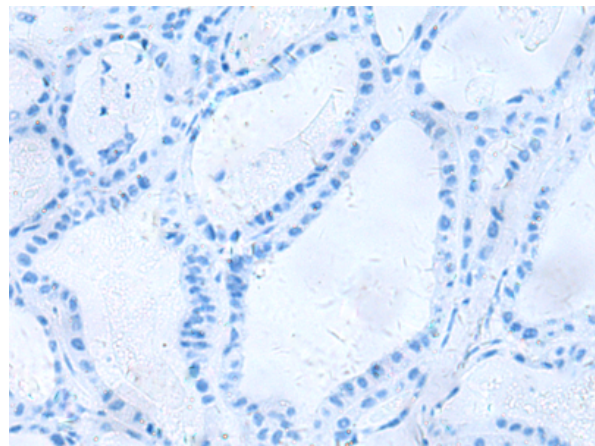
Immunohistochemistry analysis of paraffin embedded Human cervical cancer tissue using 219260 (CLTB Antibody) at a dilution of 1/70 (Cytoplasm).



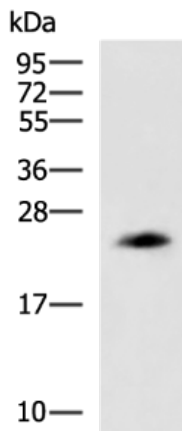
In comparison with the IHC on the left, the same paraffin-embedded Human cervical cancer tissue is first treated with the fusion protein and then with 219260 (Anti-CLTB Antibody) at dilution 1/70.



The image on the left is immunohistochemistry of paraffin-embedded Human thyroid cancer tissue using 219260 (Anti-CLTB Antibody) at a dilution of 1/70.



In comparison with the IHC on the left, the same paraffin-embedded Human thyroid cancer tissue is first treated with fusion protein and then with D226146 (Anti-CLTB Antibody) at dilution 1/70.



Gel: 12% SDS-PAGE, Lysate: 40 µg;  
Lane: NIH/3T3 cell lysate;  
Primary antibody: 219260 (CLTB Antibody) at dilution 1/800;  
Secondary antibody: HRP-conjugated Goat anti rabbit IgG at 1/5000 dilution;  
Exposure time: 50 seconds



# Product Description

Pioneering GTPase and Oncogene Product Development since 2010

---