

## CLSTN1 RABBIT MAB

**Cat.#:** N263275

**Product Name:** Anti-CLSTN1 Rabbit Monoclonal Antibody

**Synonyms:** Alcadin alpha 1; alcalpha1; alcalpha2; Calsyntenin 1; CDHR12; Clstn1; CSI; CSTN1; PIK3CD; XB31alpha

**UNIPROT ID:** O94985

**Background:** Induces KLC1 association with vesicles and functions as a cargo in axonal anterograde transport. Complex formation with APBA2 and APP, stabilizes APP metabolism and enhances APBA2-mediated suppression of beta-APP40 secretion, due to the retardation of intracellular APP maturation.

**Immunogen:** A synthetic peptide of human CLSTN1

**Applications:** WB,IHC-F,IHC-P,ICC/IF

**Recommended Dilutions:** WB: 1/500-1/1000 IHC: 1/50-1/100 IF: 1/50-1/200

**Host Species:** Rabbit

**Clonality:** Rabbit Monoclonal

**Clone ID:** R07-8H2

**MW:** Calculated MW: 110 kDa; Observed MW: 115 kDa

**Isotype:** IgG

**Purification:** Affinity Purified

**Species Reactivity:** Human,Mouse,Hamster

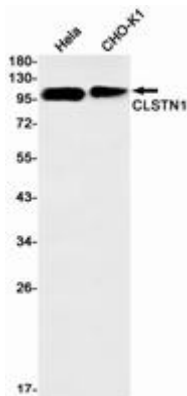
**Conjugation:** Unconjugated

**Modification:** Unmodified

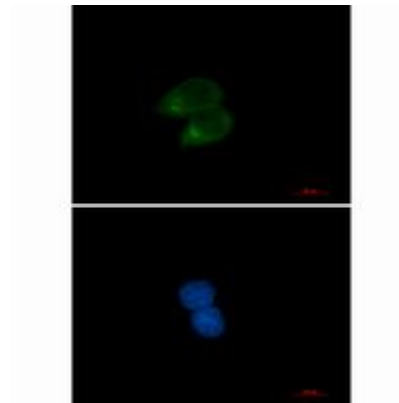
**Constituents:** PBS (without Mg<sup>2+</sup> and Ca<sup>2+</sup>), pH 7.3 containing 50% glycerol, 0.5% BSA and 0.02% sodium azide

**Research Areas:** Neuroscience

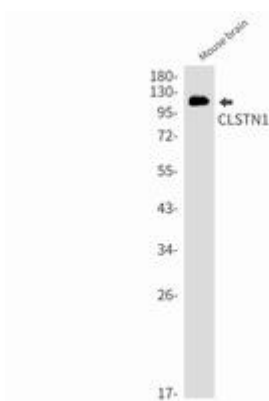
**Storage & Shipping:** Store at -20°C. Avoid repeated freezing and thawing



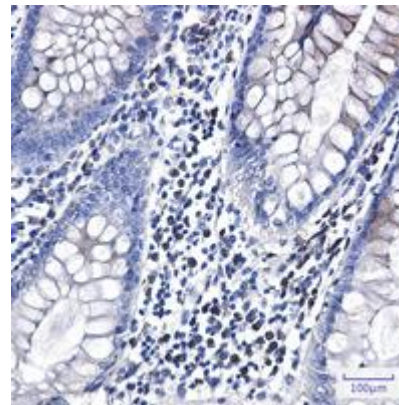
Western blot analysis of CLSTN1 in HeLa, CHO-K1 lysates using CLSTN1 antibody



Immunocytochemistry analysis of CLSTN1 (green) in HeLa using CLSTN1 antibody, and DAPI (blue).



Western blot analysis of CLSTN1 in mouse brain lysates using CLSTN1 antibody.



Immunohistochemistry analysis of paraffin-embedded Human colon cancer using CLSTN1 antibody. High-pressure and temperature Sodium Citrate pH 6.0 was used for antigen retrieval.