

## CLPX RABBIT MAB

**Cat.#:** N263274

**Product Name:** Anti-CLPX Rabbit Monoclonal Antibody

**Synonyms:** ATP-dependent Clp protease ATP-binding subunit clpX-like; mitochondrial; CLPX

**UNIPROT ID:** O76031

**Background:** ATP-dependent specificity component of the Clp protease complex.

**Immunogen:** A synthetic peptide of human CLPX

**Applications:** WB,ICC/IF

**Recommended Dilutions:** WB: 1/500-1/1000 IF: 1/50-1/200

**Host Species:** Rabbit

**Clonality:** Rabbit Monoclonal

**Clone ID:** R05-2A6

**MW:** Calculated MW: 69 kDa; Observed MW: 69 kDa

**Isotype:** IgG

**Purification:** Affinity Purified

**Species Reactivity:** Human,Mouse,Rat,Hamster

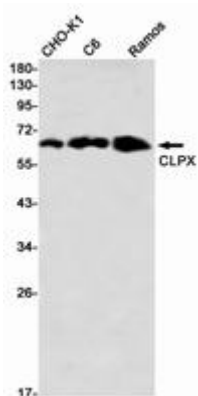
**Conjugation:** Unconjugated

**Modification:** Unmodified

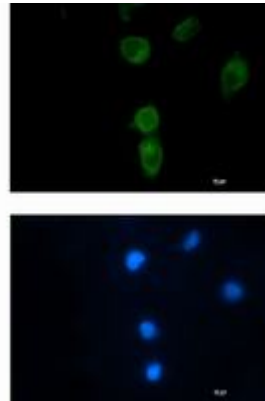
**Constituents:** PBS (without Mg<sup>2+</sup> and Ca<sup>2+</sup>), pH 7.3 containing 50% glycerol, 0.5% BSA and 0.02% sodium azide

**Research Areas:** -

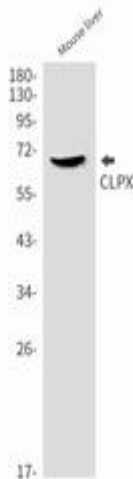
**Storage & Shipping:** Store at -20°C. Avoid repeated freezing and thawing



Western blot analysis of CLPX in CHO-K1, C6, Ramos lysates using CLPX antibody



Immunocytochemistry analysis of CLPX (green) in HT-1080 using CLPX antibody, and DAPI (blue).



Western blot analysis of CLPX in mouse liver lysates using CLPX antibody.