

CLIP170 RABBIT MAB

Cat.#: N263273

Product Name: Anti-CLIP170 Rabbit Monoclonal Antibody

Synonyms: RSN; CLIP; CYLN1; CLIP170; CLIP-170

UNIPROT ID: P30622

Background: Binds to the plus end of microtubules and regulates the dynamics of the microtubule cytoskeleton.

Immunogen: A synthetic peptide of human CLIP170

Applications: WB,IHC-F,IHC-P,ICC/IF,IP

Recommended Dilutions: WB: 1/500-1/1000 IHC: 1/50-1/100 IF: 1/50-1/200 IP: 1/20

Host Species: Rabbit

Clonality: Rabbit Monoclonal

Clone ID: R07-1F3

MW: Calculated MW: 162 kDa; Observed MW: 170 kDa

Isotype: IgG

Purification: Affinity Purified

Species Reactivity: Human

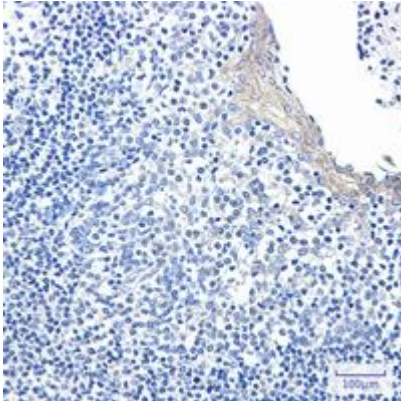
Conjugation: Unconjugated

Modification: Unmodified

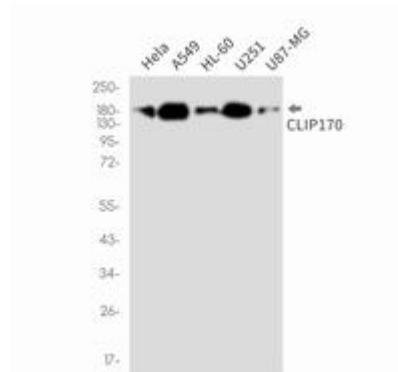
Constituents: PBS (without Mg²⁺ and Ca²⁺), pH 7.3 containing 50% glycerol, 0.5% BSA and 0.02% sodium azide

Research Areas: Cell Biology

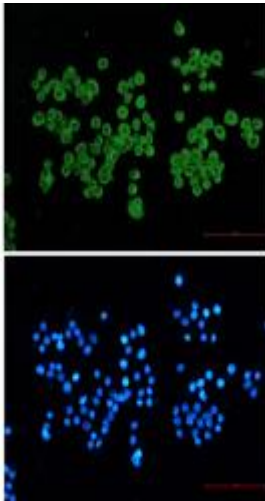
Storage & Shipping: Store at -20°C. Avoid repeated freezing and thawing



Immunohistochemistry analysis of paraffin-embedded Human tonsil using CLIP170 antibody. High-pressure and temperature Sodium Citrate pH 6.0 was used for antigen retrieval.



Western blot analysis of CLIP170 in HeLa, A549, HL-60, U251, U87-MG lysates using CLIP170 antibody.



Immunocytochemistry analysis of CLIP17 (green) in HeLa cells using CLIP170 antibody and DAPI (blue)