

## CLIC1 RABBIT MAB

**Cat.#:** N263272

**Product Name:** Anti-CLIC1 Rabbit Monoclonal Antibody

**Synonyms:** Chloride intracellular channel protein 1; Chloride channel ABP; Nuclear chloride ion channel 27; NCC27; Regulatory nuclear chloride ion channel protein; hRNCC

**UNIPROT ID:** O00299

**Background:** Can insert into membranes and form chloride ion channels.

**Immunogen:** Recombinant protein of human CLIC1

**Applications:** WB,ICC/IF,IP

**Recommended Dilutions:** WB: 1/500-1/1000 IF: 1/50-1/200 IP: 1/20

**Host Species:** Rabbit

**Clonality:** Rabbit Monoclonal

**Clone ID:** R08-4A2

**MW:** Calculated MW: 27 kDa; Observed MW: 27 kDa

**Isotype:** IgG

**Purification:** Affinity Purified

**Species Reactivity:** Human,Mouse,Rat,Hamster

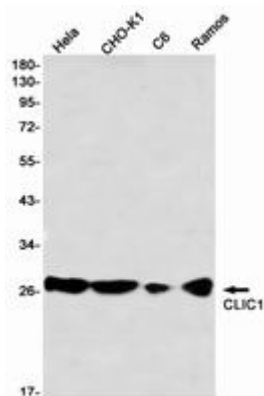
**Conjugation:** Unconjugated

**Modification:** Unmodified

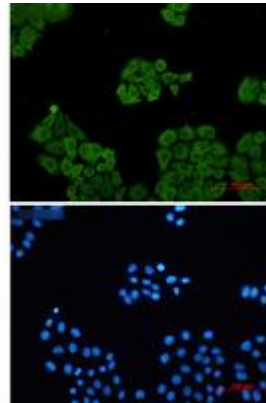
**Constituents:** PBS (without Mg<sup>2+</sup> and Ca<sup>2+</sup>), pH 7.3 containing 50% glycerol, 0.5% BSA and 0.02% sodium azide

**Research Areas:** Signal Transduction

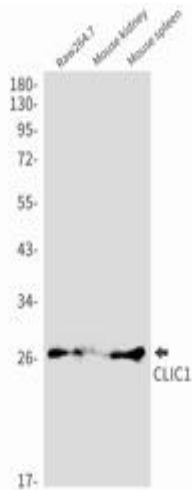
**Storage & Shipping:** Store at -20°C. Avoid repeated freezing and thawing



Western blot analysis of CLIC1 in HeLa, CHO-K1, C6, Ramos lysates using CLIC1 antibody



Immunocytochemistry analysis of CLIC1 (green) in HeLa using CLIC1 antibody, and DAPI (blue).



Western blot analysis of CLIC1 in Raw264.7, mouse kidney, mouse spleen lysates using CLIC1 antibody.