

CLEC4C RABBIT PAB

Cat.#: S220153

Product Name: Anti-CLEC4C Rabbit Polyclonal Antibody

Synonyms: DLEC, HECL, BDCA2, CD303, CLECSF7, CLECSF11, PRO34150

UNIPROT ID: Q8WTT0 (Gene Accession - NP_569708)

Background: This gene encodes a member of the C-type lectin/C-type lectin-like domain (CTL/CTLD) superfamily. Members of this family share a common protein fold and have diverse functions, such as cell adhesion, cell-cell signalling, glycoprotein turnover, and roles in inflammation and immune response. The encoded type 2 transmembrane protein may play a role in dendritic cell function. Two transcript variants encoding distinct isoforms have been identified for this gene.

Immunogen: Synthetic peptide of human CLEC4C

Applications: ELISA, IHC

Recommended Dilutions: IHC: 50-100; ELISA: 2000-10000

Host Species: Rabbit

Clonality: Rabbit Polyclonal

Isotype: Immunogen-specific rabbit IgG

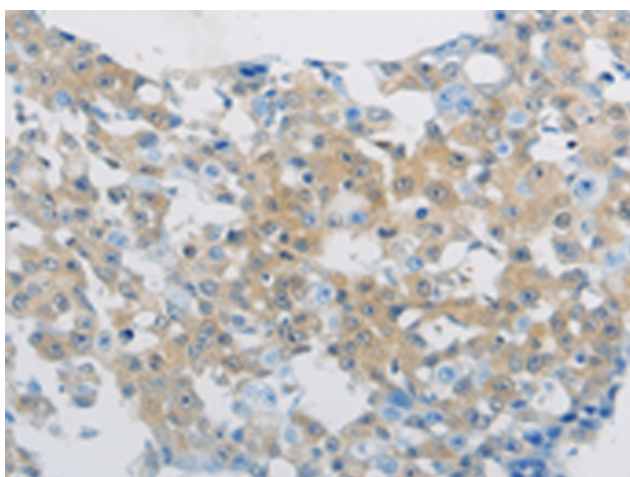
Purification: Antigen affinity purification

Species Reactivity: Human

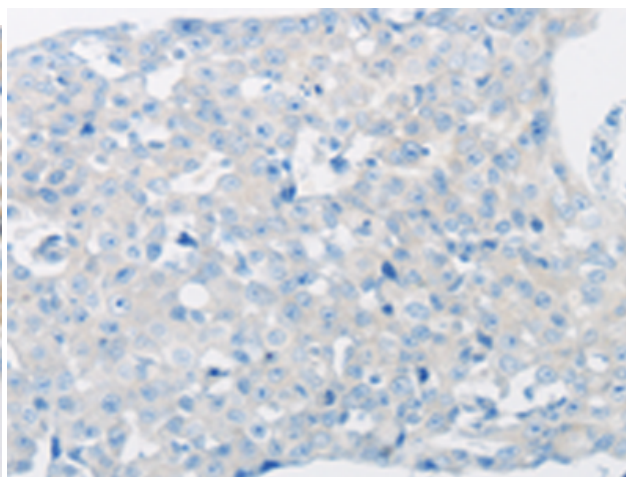
Constituents: PBS (without Mg²⁺ and Ca²⁺), pH 7.4, 150 mM NaCl, 0.05% Sodium Azide and 40% glycerol

Research Areas: Immunology

Storage & Shipping: Store at -20°C. Avoid repeated freezing and thawing



Immunohistochemistry analysis of paraffin embedded Human breast cancer tissue using 220153(CLEC4C Antibody) at a dilution of 1/70(Cytoplasm).



In comparison with the IHC on the left, the same paraffin-embedded Human breast cancer tissue is first treated with the synthetic peptide and then with 220153(Anti-CLEC4C Antibody) at dilution 1/70.