

CLEC3B RABBIT PAB

Cat.#: S218831

Product Name: Anti-CLEC3B Rabbit Polyclonal Antibody

Synonyms: TN; TNA

UNIPROT ID: P05452 (Gene Accession - BC011024)

Background: Tetranectin binds to plasminogen and to isolated kringle 4. May be involved in the packaging of molecules destined for exocytosis.

Immunogen: Fusion protein of human CLEC3B

Applications: ELISA, WB, IHC

Recommended Dilutions: IHC: 40-200;WB: 500-2000;ELISA: 5000-10000

Host Species: Rabbit

Clonality: Rabbit Polyclonal

Isotype: Immunogen-specific rabbit IgG

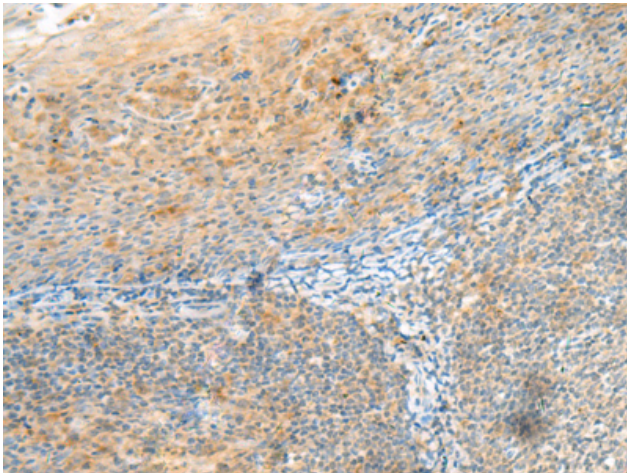
Purification: Antigen affinity purification

Species Reactivity: Human, Mouse, Rat

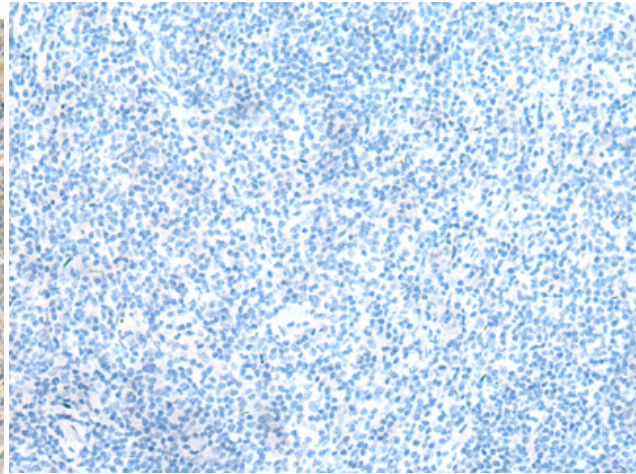
Constituents: PBS (without Mg²⁺ and Ca²⁺), pH 7.4, 150 mM NaCl, 0.05% Sodium Azide and 40% glycerol

Research Areas: Signal Transduction, Cardiovascular

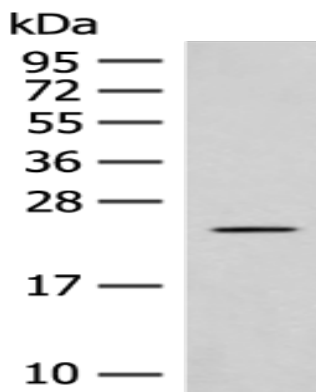
Storage & Shipping: Store at -20°C. Avoid repeated freezing and thawing



Immunohistochemistry analysis of paraffin embedded Human tonsil tissue using 218831(CLEC3B Antibody) at a dilution of 1/90(Cytoplasm).



In comparison with the IHC on the left, the same paraffin-embedded Human tonsil tissue is first treated with the fusion protein and then with 218831(Anti-CLEC3B Antibody) at dilution 1/90.



Gel: 12%SDS-PAGE, Lysate: 40 μ g;
Lane: Rat heart tissue lysate;
Primary antibody: 218831(CLEC3B Antibody) at dilution 1/650;
Secondary antibody: Goat anti rabbit IgG at 1/8000 dilution;
Exposure time: 30 seconds