

CLEAVED-NOTCH1 RABBIT PAB

Cat.#: N225351

Product Name: Anti-Cleaved-Notch1 Rabbit pAb

Synonyms: NOTCH1; TANI; Neurogenic locus notch homolog protein 1; Notch 1; hNI; Translocation-associated notch protein TAN-1

UNIPROT ID: P46531

Background: Functions as a receptor for membrane-bound ligands Jagged1, Jagged2 and Delta1 to regulate cell-fate determination. Upon ligand activation through the released notch intracellular domain (NICD) it forms a transcriptional activator complex with RBPJ/RBPSUH and activates genes of the enhancer of split locus. Affects the implementation of differentiation, proliferation and apoptotic programs. Involved in angiogenesis; negatively regulates endothelial cell proliferation and migration and angiogenic sprouting.

Immunogen: The antiserum was produced against synthesized peptide derived from human Notch 1. AA range:1735-1784

Applications: WB,ICC/IF,IHC-F,IHC-P,ELISA

Recommended Dilutions: WB: 1/500-1/1000 IHC: 1/50-1/100 IF: 1/50-1/200
ELISA: 1/10000

Host Species: Rabbit

Clonality: Rabbit Polyclonal

Clone ID: -

MW: Calculated MW: 273 kDa; Observed MW: 110 kDa

Isotype: IgG

Purification: Affinity Purified

Species Reactivity: Human,Mouse,Rat

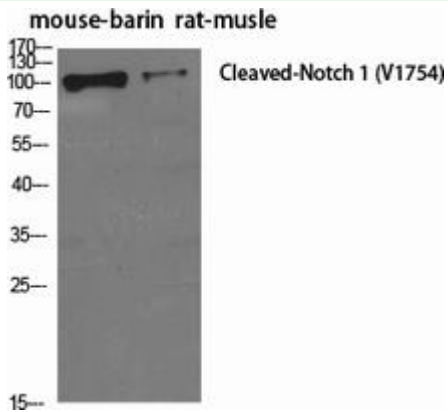
Conjugation: Unconjugated

Modification: Cleaved

Constituents: PBS (without Mg²⁺ and Ca²⁺), pH 7.3 containing 50% glycerol, 0.5% BSA and 0.02% sodium azide

Research Areas: Neuroscience

Storage & Shipping: Store at -20°C. Avoid repeated freezing and thawing



Western blot analysis of Cleaved-Notch1 in various lysates using Cleaved-Notch1 antibody.