

## CLEAVED-CASPASE 6 P18 RABBIT PAB

**Cat.#:** N225413

**Product Name:** Anti-Cleaved-Caspase 6 p18 Rabbit pAb

**Synonyms:** CASP6; MCH2; Caspase-6; CASP-6; Apoptotic protease Mch-2

**UNIPROT ID:** P55212

**Background:** Caspase-6 (Mch2) is one of the major executioner caspases functioning in cellular apoptotic processes. Upon apoptotic stimulation, initiator caspases such as caspase-9 are cleaved and activated. The activated upstream caspases further process downstream executioner caspases, such as caspase-3 and caspase-6, by cleaving them into large and small subunits, thereby initiating a caspase cascade leading to apoptosis. One of the major targets for caspase-6 is the membrane associated protein lamin A.

**Immunogen:** The antiserum was produced against synthesized peptide derived from human Caspase 6. AA range:130-179

**Applications:** WB,IHC-P,ELISA

**Recommended Dilutions:** WB: 1/500-1/1000 IHC: 1/50-1/100 ELISA: 1/10000

**Host Species:** Rabbit

**Clonality:** Rabbit Polyclonal

**Clone ID:** -

**MW:** Calculated MW: 33 kDa; Observed MW: 20,35 kDa

**Isotype:** IgG

**Purification:** Affinity Chromatography

**Species Reactivity:** Human,Rat

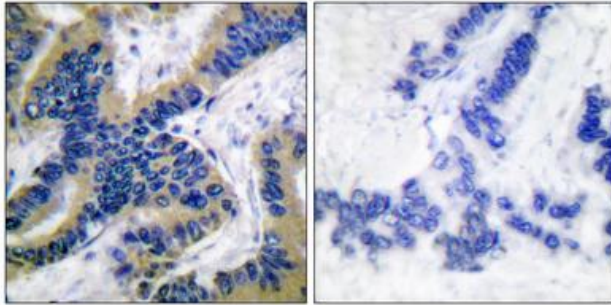
**Conjugation:** Unconjugated

**Modification:** Cleaved

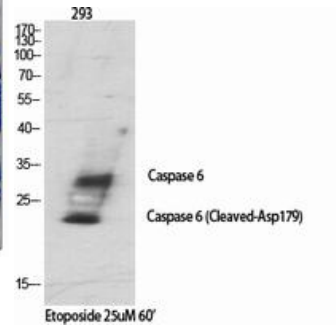
**Constituents:** PBS (without Mg<sup>2+</sup> and Ca<sup>2+</sup>), pH 7.3 containing 50% glycerol, 0.5% BSA and 0.02% sodium azide

**Research Areas:** apoptosis - Caspase family

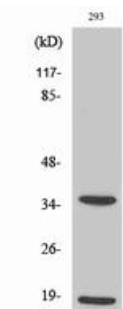
**Storage & Shipping:** Store at -20°C. Avoid repeated freezing and thawing



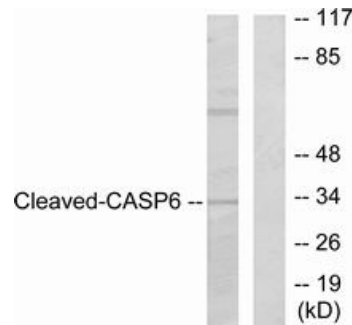
Immunohistochemistry analysis of paraffin-embedded Human lung carcinoma tissue using Caspase 6 (Cleaved-Asp16, 2) antibody. High-pressure and temperature Sodium Citrate pH 6.0 was used for antigen retrieval. Sample with blocking peptide on the right.



Western blot analysis of Cleaved-Caspase 6 p18 in various lysates using Cleaved-Caspase 6 p18 antibody.



Western blot analysis of Cleaved-Caspase 6 p18 in 293 lysates using Cleaved-Caspase 6 p18 (D179) antibody.



Western blot analysis of Cleaved-Caspase 6 p18 in 293 lysates treated with Etoposide using Cleaved-Caspase 6 p18 antibody. The lane on the right is blocked with the synthesized peptide.