

CLEAVED-CASPASE 3 P17 RABBIT PAB

Cat.#: N225412

Product Name: Anti-Cleaved-Caspase 3 p17 Rabbit pAb

Synonyms: CASP3; CPP32; Caspase-3; CASP-3; Apopain; Cysteine protease CPP32; CPP-32; Protein Yama; SREBP cleavage activity 1; SCA-1

UNIPROT ID: P42574

Background: Sequential activation of caspases plays a central role in the execution-phase of cell apoptosis. Caspases exist as inactive proenzymes which undergo proteolytic processing at conserved aspartic residues to produce 2 subunits, large and small, that dimerize to form the active enzyme.

Immunogen: The antiserum was produced against synthesized peptide derived from human Caspase 3. AA range:126-175

Applications: WB, ICC/IF, IHC-F, IHC-P, ELISA

Recommended Dilutions: WB: 1/500-1/1000 IHC: 1/50-1/100 IF: 1/50-1/200 ELISA: 1/10000

Host Species: Rabbit

Clonality: Rabbit Polyclonal

Clone ID: -

MW: Calculated MW: 32 kDa; Observed MW: 17 kDa

Isotype: IgG

Purification: Affinity Purified

Species Reactivity: Human, Mouse, Rat

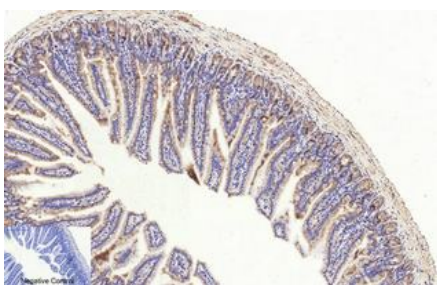
Conjugation: Unconjugated

Modification: Cleaved

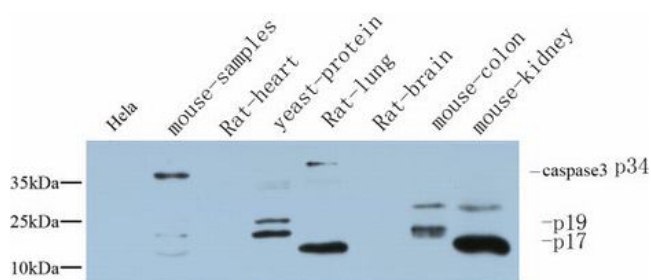
Constituents: PBS (without Mg²⁺ and Ca²⁺), pH 7.3 containing 50% glycerol, 0.5% BSA and 0.02% sodium azide

Research Areas: Cell Biology

Storage & Shipping: Store at -20°C. Avoid repeated freezing and thawing



Immunohistochemistry analysis of paraffin-embedded mouse colon tissue using Cleaved-Caspase3 p17 antibody. High-pressure and temperature Sodium Citrate pH 6.0 was used for antigen retrieval.



Western blot analysis of Cleaved-Caspase3 in various lysates using Cleaved-Caspase3 p17 antibody.