

CLDND1 RABBIT PAB

Cat.#: S216439

Product Name: Anti-CLDND1 Rabbit Polyclonal Antibody

Synonyms: Z38; C3orf4; GENX-3745

UNIPROT ID: Q9NY35 (Gene Accession - BC001757)

Background: Located in cell surface. [provided by Alliance of Genome Resources, Apr 2022]

Immunogen: Fusion protein of human CLDND1

Applications: ELISA, IHC

Recommended Dilutions: IHC: 50-200; ELISA: 5000-10000

Host Species: Rabbit

Clonality: Rabbit Polyclonal

Isotype: Immunogen-specific rabbit IgG

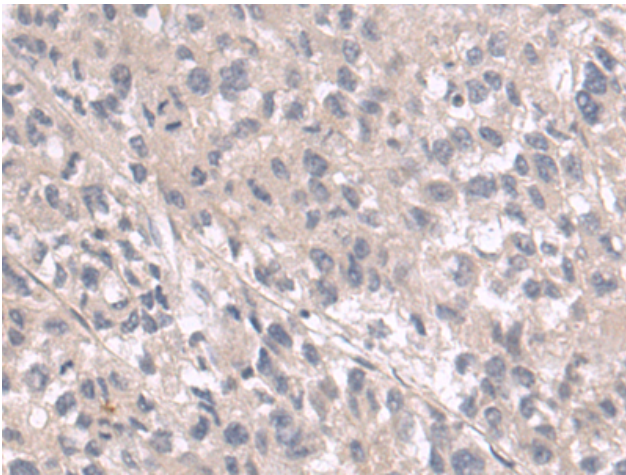
Purification: Antigen affinity purification

Species Reactivity: Human, Mouse

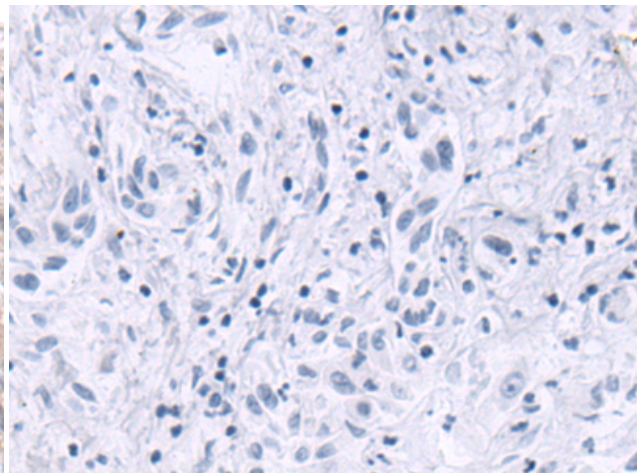
Constituents: PBS (without Mg²⁺ and Ca²⁺), pH 7.4, 150 mM NaCl, 0.05% Sodium Azide and 40% glycerol

Research Areas: Cell Biology, Neuroscience

Storage & Shipping: Store at -20°C. Avoid repeated freezing and thawing



Immunohistochemistry analysis of paraffin embedded Human liver cancer tissue using 216439 (CLDND1 Antibody) at a dilution of 1/70 (Cytoplasm and Cell membrane).



In comparison with the IHC on the left, the same paraffin-embedded Human liver cancer tissue is first treated with the fusion protein and then with 216439 (Anti-CLDND1 Antibody) at dilution 1/70.