

CLDN7 RABBIT PAB

Cat.#: S219811

Product Name: Anti-CLDN7 Rabbit Polyclonal Antibody

Synonyms: CLDN-7, CEPTRL2, CPETRL2, Hs.84359, claudin-1

UNIPROT ID: O95471 (Gene Accession - NP_001298)

Background: This gene encodes a member of the claudin family. Claudins are integral membrane proteins and components of tight junction strands. Tight junction strands serve as a physical barrier to prevent solutes and water from passing freely through the paracellular space between epithelial or endothelial cell sheets, and also play critical roles in maintaining cell polarity and signal transductions. Differential expression of this gene has been observed in different types of malignancies, including breast cancer, ovarian cancer, hepatocellular carcinomas, urinary tumors, prostate cancer, lung cancer, head and neck cancers, thyroid carcinomas, etc.. Alternatively spliced transcript variants encoding different isoforms have been found.

Immunogen: Synthetic peptide of human CLDN7

Applications: ELISA, WB, IHC

Recommended Dilutions: IHC: 50-150;WB: 1000-3000;ELISA: 1000-10000

Host Species: Rabbit

Clonality: Rabbit Polyclonal

Isotype: Immunogen-specific rabbit IgG

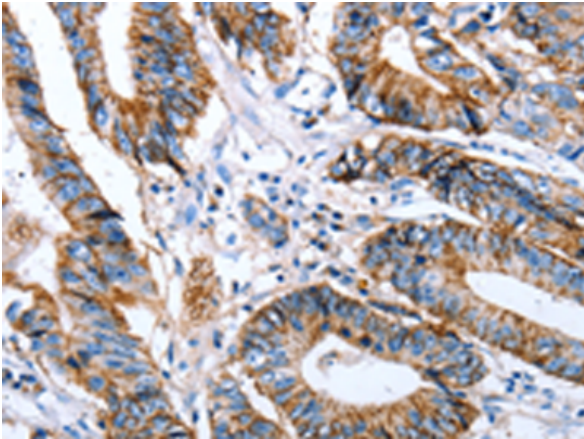
Purification: Antigen affinity purification

Species Reactivity: Human, Mouse, Rat

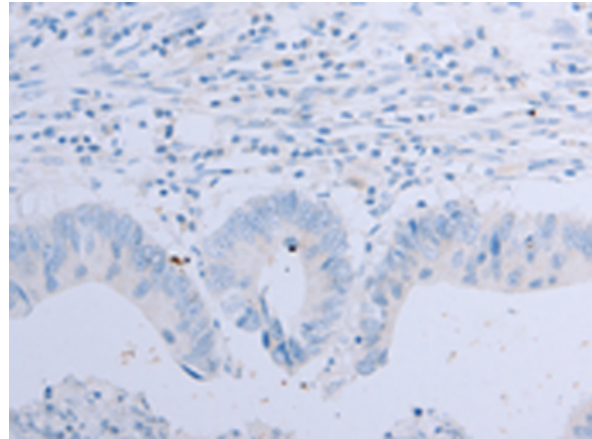
Constituents: PBS (without Mg²⁺ and Ca²⁺), pH 7.4, 150 mM NaCl, 0.05% Sodium Azide and 40% glycerol

Research Areas: Signal Transduction

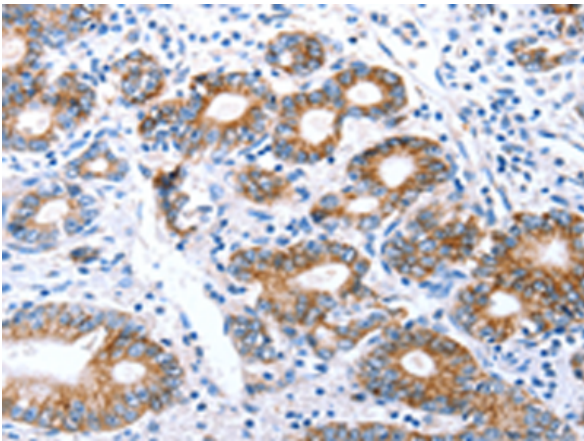
Storage & Shipping: Store at -20°C. Avoid repeated freezing and thawing



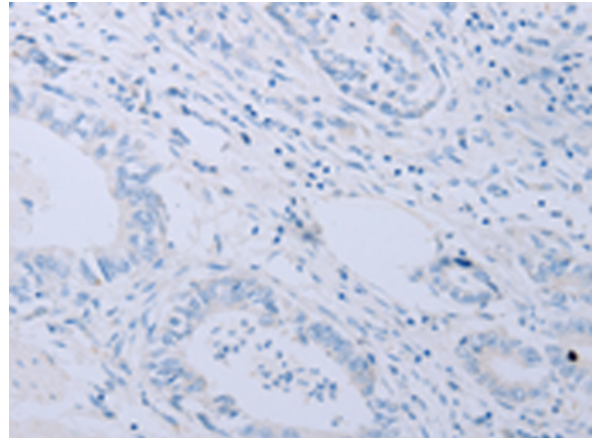
Immunohistochemistry analysis of paraffin embedded Human colon cancer tissue using 219811 (CLDN7 Antibody) at a dilution of 1/50 (Cytoplasm, Cell membrane).



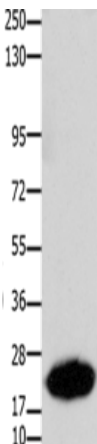
In comparison with the IHC on the left, the same paraffin-embedded Human colon cancer tissue is first treated with the synthetic peptide and then with 219811 (Anti-CLDN7 Antibody) at dilution 1/50.



The image on the left is immunohistochemistry of paraffin-embedded Human stomach cancer tissue using 219811 (Anti-CLDN7 Antibody) at a dilution of 1/50.



In comparison with the IHC on the left, the same paraffin-embedded Human stomach cancer tissue is first treated with synthetic peptide and then with D260406 (Anti-CLDN7 Antibody) at dilution 1/50.



Gel: 10% SDS-PAGE, Lysate: 30 µg;
Lane: Human liver cancer tissue;
Primary antibody: 219811 (CLDN7 Antibody) at dilution 1/1050;
Secondary antibody: Goat anti rabbit IgG at 1/8000 dilution;
Exposure time: 40 seconds



Product Description

Pioneering GTPase and Oncogene Product Development since 2010
