

CLDN19 RABBIT PAB

Cat.#: S219711

Product Name: Anti-CLDN19 Rabbit Polyclonal Antibody

Synonyms: HOMG5

UNIPROT ID: Q8N6F1 (Gene Accession - NP_683763)

Background: The product of this gene belongs to the claudin family. It plays a major role in tight junction-specific obliteration of the intercellular space, through calcium-independent cell-adhesion activity. Defects in this gene are the cause of hypomagnesemia renal with ocular involvement (HOMGO). HOMGO is a progressive renal disease characterized by primary renal magnesium wasting with hypomagnesemia, hypercalciuria and nephrocalcinosis associated with severe ocular abnormalities such as bilateral chorioretinal scars, macular colobomata, significant myopia and nystagmus.

Immunogen: Synthetic peptide of human CLDN19

Applications: ELISA, WB, IHC

Recommended Dilutions: IHC: Oct-50;WB: 200-1000;ELISA: 1000-2000

Host Species: Rabbit

Clonality: Rabbit Polyclonal

Isotype: Immunogen-specific rabbit IgG

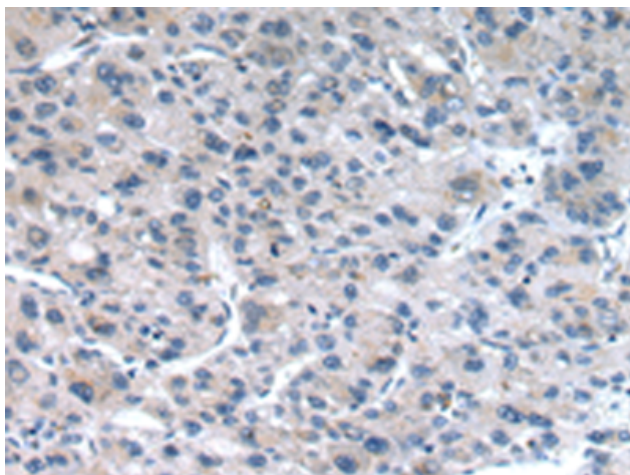
Purification: Antigen affinity purification

Species Reactivity: Human, Mouse, Rat

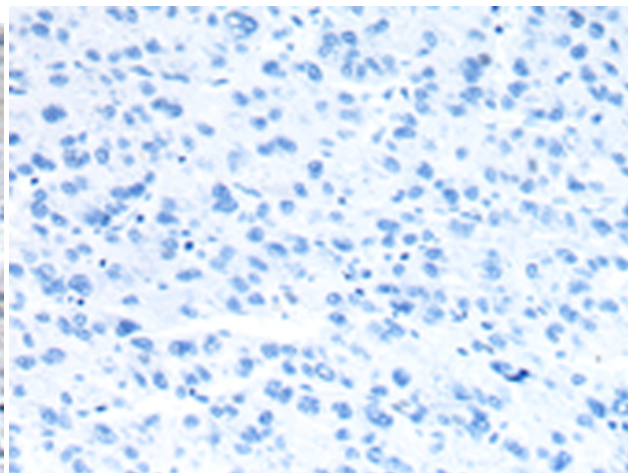
Constituents: PBS (without Mg²⁺ and Ca²⁺), pH 7.4, 150 mM NaCl, 0.05% Sodium Azide and 40% glycerol

Research Areas: Signal Transduction

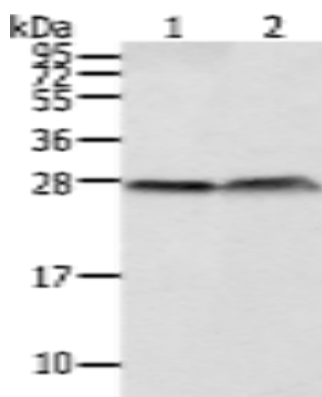
Storage & Shipping: Store at -20°C. Avoid repeated freezing and thawing



Immunohistochemistry analysis of paraffin embedded Human liver cancer tissue using 219711 (CLDN19 Antibody) at a dilution of 1/30 (Cell membrane).



In comparison with the IHC on the left, the same paraffin-embedded Human liver cancer tissue is first treated with the synthetic peptide and then with 219711 (Anti-CLDN19 Antibody) at dilution 1/30.



Gel: 12% SDS-PAGE, Lysate: 40 μ g;
Lane 1-2: HepG2 and 293T cell;
Primary antibody: 219711 (CLDN19 Antibody) at dilution 1/200;
Secondary antibody: Goat anti rabbit IgG at 1/8000 dilution;
Exposure time: 5 seconds