

CLAUDIN 4 RABBIT PAB

Cat.#: N225437

Product Name: Anti-Claudin 4 Rabbit pAb

Synonyms: CLDN4; CPER; CPETRI; WBSCR8; Claudin-4; Clostridium perfringens enterotoxin receptor; CPE-R; CPE-receptor; Williams-Beuren syndrome chromosomal region 8 protein

UNIPROT ID: O14493

Background: Plays a major role in tight junction-specific obliteration of the intercellular space.

Immunogen: The antiserum was produced against synthesized peptide derived from human Claudin 4. AA range:160-209

Applications: WB,IHC-F,IHC-P,ICC/IF,ELISA

Recommended Dilutions: WB: 1/500-1/1000 IHC: 1/50-1/100 IF: 1/50-1/200 ELISA: 1/10000

Host Species: Rabbit

Clonality: Rabbit Polyclonal

Clone ID: -

MW: Calculated MW: 22 kDa; Observed MW: 22 kDa

Isotype: IgG

Purification: Affinity Chromatography

Species Reactivity: Human,Mouse,Rat

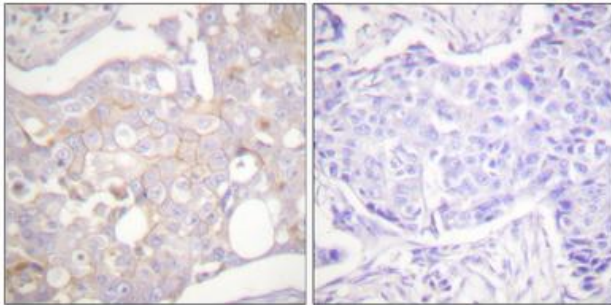
Conjugation: Unconjugated

Modification: Unmodified

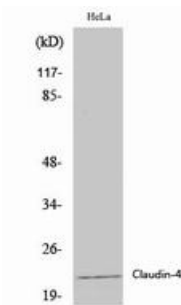
Constituents: PBS (without Mg²⁺ and Ca²⁺), pH 7.3 containing 50% glycerol, 0.5% BSA and 0.02% sodium azide

Research Areas: Cell Biology

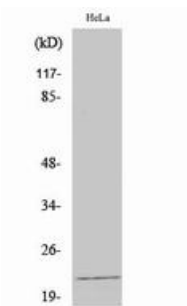
Storage & Shipping: Store at -20°C. Avoid repeated freezing and thawing



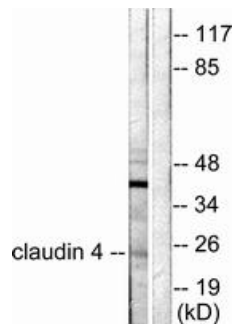
Immunohistochemistry analysis of paraffin-embedded Human breast carcinoma tissue using Claudin 4 antibody. High-pressure and temperature Sodium Citrate pH 6.0 was used for antigen retrieval.



Western blot analysis of Claudin 4 in various lysates using Claudin 4 antibody.



Western blot analysis of Claudin 4 in HeLa lysates using Claudin 4 antibody.



Western blot analysis of Claudin 4 in HeLa lysates using Claudin 4 antibody. The lane on the right is blocked with the synthesized peptide.