

CKAP4 RABBIT PAB

Cat.#: S220461

Product Name: Anti-CKAP4 Rabbit Polyclonal Antibody

Synonyms: p63; CLIMP-63; ERGIC-63

UNIPROT ID: Q07065 (Gene Accession - NP_006816)

Background: CKAP4 (cytoskeleton-associated protein 4), also known as p63, CLIMP-63 or ERGIC-63, is a 602 amino acid single-pass type II transmembrane protein that links the endoplasmic reticulum (ER) to the cytoskeleton. Considered a novel protein in maintaining ER morphology, CKAP4 anchors the ER to microtubules which is required for maintaining ER spatial distribution during interphase of the cell cycle. CKAP4 can be reversibly palmitoylated and phosphorylated and is a major substrate of the palmitoyl acyltransferase, ZDHHC2.

Immunogen: Synthetic peptide of human CKAP4

Applications: ELISA, WB, IHC

Recommended Dilutions: IHC: 25-100;WB: 1000-5000;ELISA: 2000-10000

Host Species: Rabbit

Clonality: Rabbit Polyclonal

Isotype: Immunogen-specific rabbit IgG

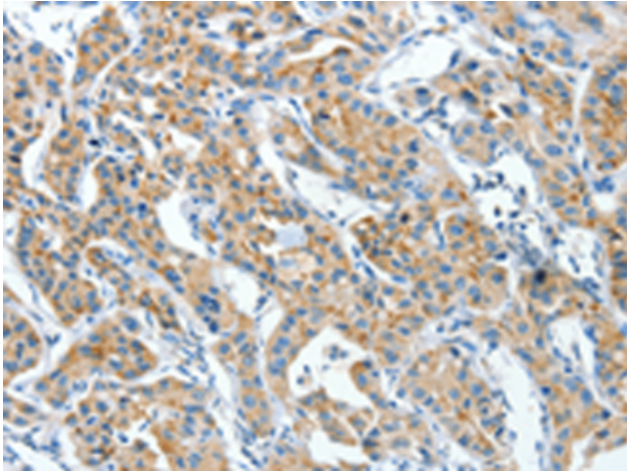
Purification: Antigen affinity purification

Species Reactivity: Human, Mouse

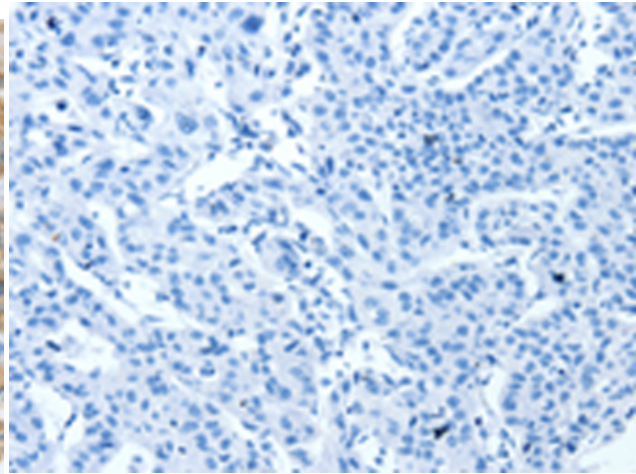
Constituents: PBS (without Mg²⁺ and Ca²⁺), pH 7.4, 150 mM NaCl, 0.05% Sodium Azide and 40% glycerol

Research Areas: Cancer

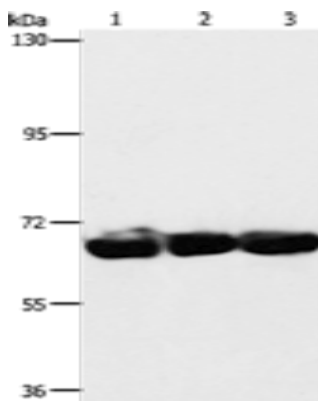
Storage & Shipping: Store at -20°C. Avoid repeated freezing and thawing



Immunohistochemistry analysis of paraffin embedded Human lung cancer tissue using 220461(CKAP4 Antibody) at a dilution of 1/30(Cytoplasm).



In comparison with the IHC on the left, the same paraffin-embedded Human lung cancer tissue is first treated with the synthetic peptide and then with 220461(Anti-CKAP4 Antibody) at dilution 1/30.



Gel: 6%SDS-PAGE, Lysate: 40 μ g;
Lane 1-3: 293T cells, hepG2 cells, A549 cells;
Primary antibody: 220461(CKAP4 Antibody) at dilution 1/750;
Secondary antibody: Goat anti rabbit IgG at 1/8000 dilution;
Exposure time: 1 minute