

CISD1 RABBIT PAB

Cat.#: S218501

Product Name: Anti-CISD1 Rabbit Polyclonal Antibody

Synonyms: ZCD1; MDS029; C10orf70; mitoNEET

UNIPROT ID: Q9NZ45 (Gene Accession - BC005962)

Background: This gene encodes a protein with a CDGSH iron-sulfur domain and has been shown to bind a redox-active [2Fe-2S] cluster. The encoded protein has been localized to the outer membrane of mitochondria and is thought to play a role in regulation of oxidation. Genes encoding similar proteins are located on chromosomes 4 and 17, and a pseudogene of this gene is located on chromosome 2.

Immunogen: Full length fusion protein

Applications: ELISA, WB, IHC

Recommended Dilutions: IHC: 25-100;WB: 500-2000;ELISA: 5000-10000

Host Species: Rabbit

Clonality: Rabbit Polyclonal

Isotype: Immunogen-specific rabbit IgG

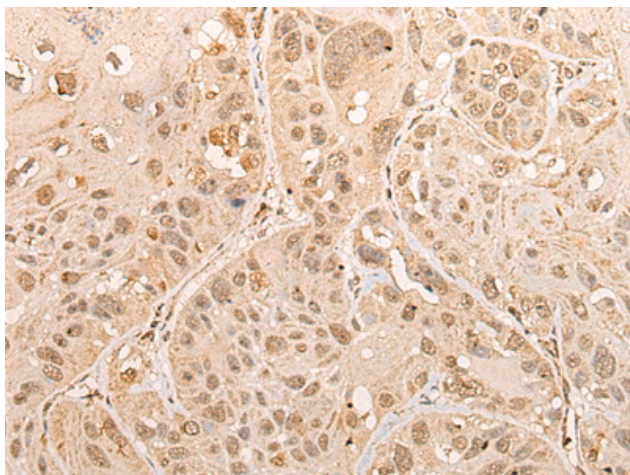
Purification: Antigen affinity purification

Species Reactivity: Human, Mouse, Rat

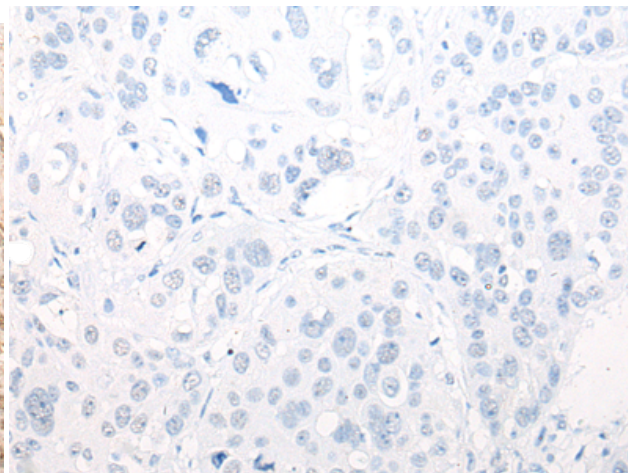
Constituents: PBS (without Mg²⁺ and Ca²⁺), pH 7.4, 150 mM NaCl, 0.05% Sodium Azide and 40% glycerol

Research Areas: Metabolism

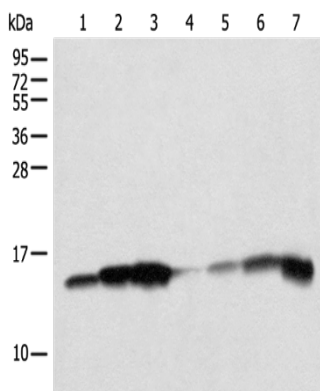
Storage & Shipping: Store at -20°C. Avoid repeated freezing and thawing



Immunohistochemistry analysis of paraffin embedded Human esophagus cancer tissue using 218501(CISD1 Antibody) at a dilution of 1/20(Nucleus and Cytoplasm).



In comparison with the IHC on the left, the same paraffin-embedded Human esophagus cancer tissue is first treated with the fusion protein and then with 218501(Anti-CISD1 Antibody) at dilution 1/20.



Gel: 12%SDS-PAGE, Lysate: 40 μ g;
Lane 1-7: Mouse skeletal muscle tissue,
Human heart tissue, Mouse brain tissue, 293T
cell, PC-3 cell, HEPG2 cell, Mouse liver tissue
lysates;
Primary antibody: 218501(CISD1 Antibody) at
dilution 1/250;
Secondary antibody: Goat anti rabbit IgG at
1/8000 dilution;
Exposure time: 3 seconds