

CHRNA4 RABBIT PAB

Cat.#: S216669

Product Name: Anti-CHRNA4 Rabbit Polyclonal Antibody

Synonyms: EBN; BFNC; EBNI; NACHR; NACRA4; NACHRA4

UNIPROT ID: P43681 (Gene Accession - BC096290)

Background: This gene encodes a nicotinic acetylcholine receptor, which belongs to a superfamily of ligand-gated ion channels that play a role in fast signal transmission at synapses. These pentameric receptors can bind acetylcholine, which causes an extensive change in conformation that leads to the opening of an ion-conducting channel across the plasma membrane. This protein is an integral membrane receptor subunit that can interact with either nAChR beta-2 or nAChR beta-4 to form a functional receptor. Mutations in this gene cause nocturnal frontal lobe epilepsy type 1.

Immunogen: Fusion protein of human CHRNA4

Applications: ELISA, WB, IHC

Recommended Dilutions: IHC: 25-100;WB: 200-1000;ELISA: 1000-2000

Host Species: Rabbit

Clonality: Rabbit Polyclonal

Isotype: Immunogen-specific rabbit IgG

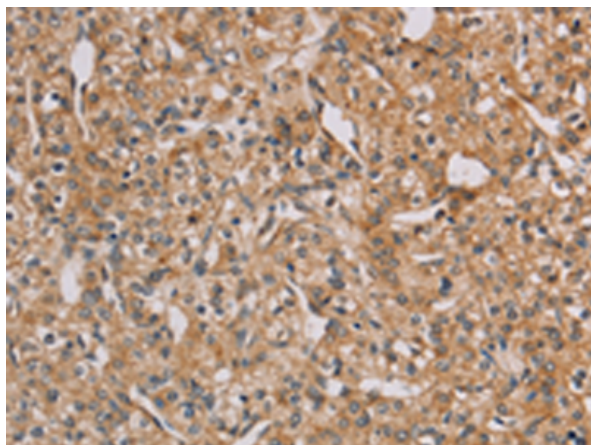
Purification: Antigen affinity purification

Species Reactivity: Human

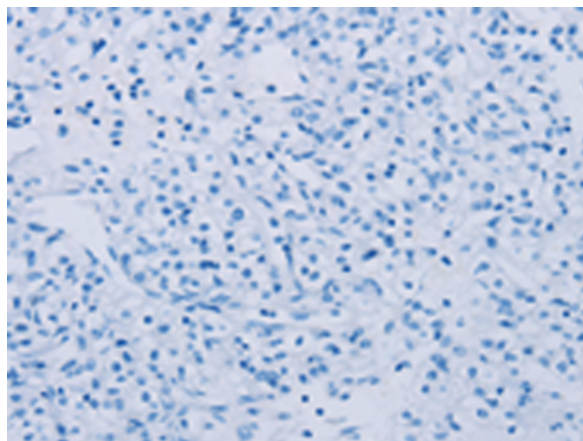
Constituents: PBS (without Mg²⁺ and Ca²⁺), pH 7.4, 150 mM NaCl, 0.05% Sodium Azide and 40% glycerol

Research Areas: Cancer, Cardiovascular, Metabolism, Neuroscience

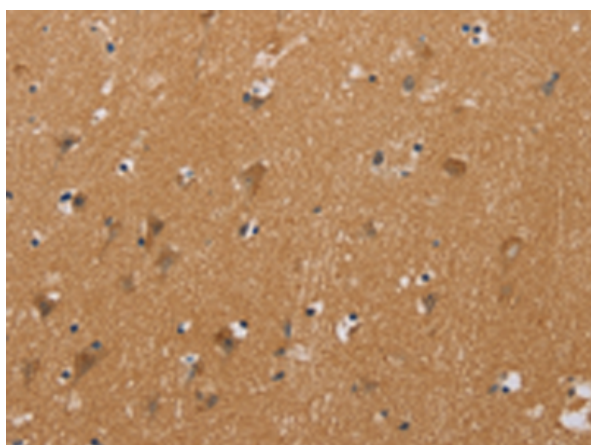
Storage & Shipping: Store at -20°C. Avoid repeated freezing and thawing



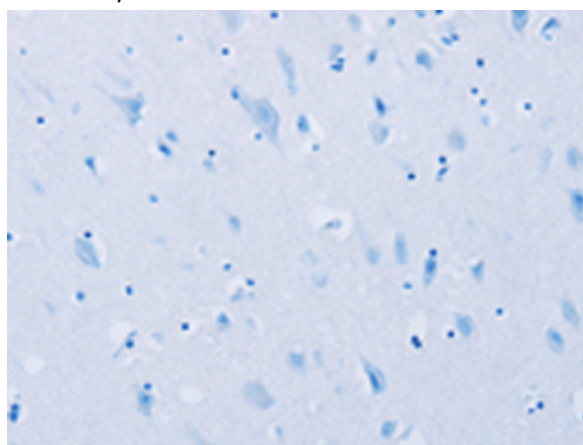
Immunohistochemistry analysis of paraffin embedded Human prostate cancer tissue using 216669(CHRNA4 Antibody) at a dilution of 1/20(Cytoplasm).



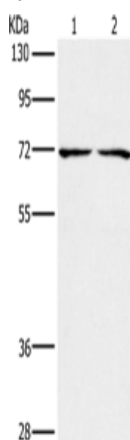
In comparison with the IHC on the left, the same paraffin-embedded Human prostate cancer tissue is first treated with the fusion protein and then with 216669(Anti-CHRNA4 Antibody) at dilution 1/20.



The image on the left is immunohistochemistry of paraffin-embedded Human brain tissue using 216669(Anti-CHRNA4 Antibody) at a dilution of 1/20.



In comparison with the IHC on the left, the same paraffin-embedded Human brain tissue is first treated with fusion protein and then with D221017(Anti-CHRNA4 Antibody) at dilution 1/20.



Gel: 8%SDS-PAGE, Lysate: 40 µg;
 Lane 1-2: Lovo cells, 293T cells;
 Primary antibody: 216669(CHRNA4 Antibody) at dilution 1/200;
 Secondary antibody: Goat anti rabbit IgG at 1/8000 dilution;
 Exposure time: 5 seconds



Product Description

Pioneering GTPase and Oncogene Product Development since 2010
