

CHRNA10 RABBIT PAB

Cat.#: S219933

Product Name: Anti-CHRNA10 Rabbit Polyclonal Antibody

Synonyms:

UNIPROT ID: Q9GZZ6 (Gene Accession - NP_065135)

Background: Predicted to enable acetylcholine-gated cation-selective channel activity. Acts upstream of or within positive regulation of cytosolic calcium ion concentration. Predicted to be located in membrane. Predicted to be active in cholinergic synapse and neuron projection. Predicted to be integral component of postsynaptic specialization membrane.

Immunogen: Synthetic peptide of human CHRNA10

Applications: ELISA, IHC

Recommended Dilutions: IHC: 50-100; ELISA: 5000-10000

Host Species: Rabbit

Clonality: Rabbit Polyclonal

Isotype: Immunogen-specific rabbit IgG

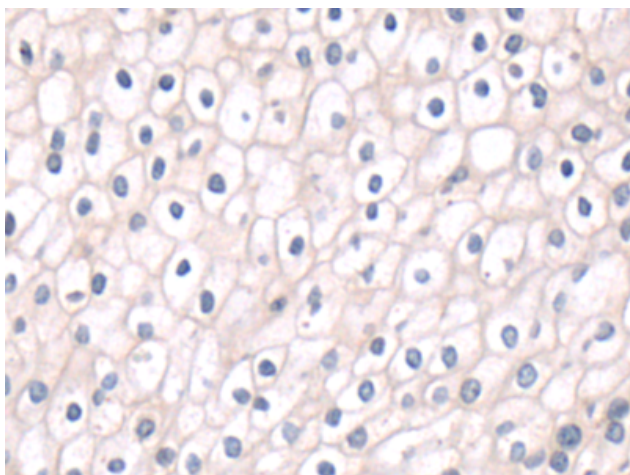
Purification: Antigen affinity purification

Species Reactivity: Human

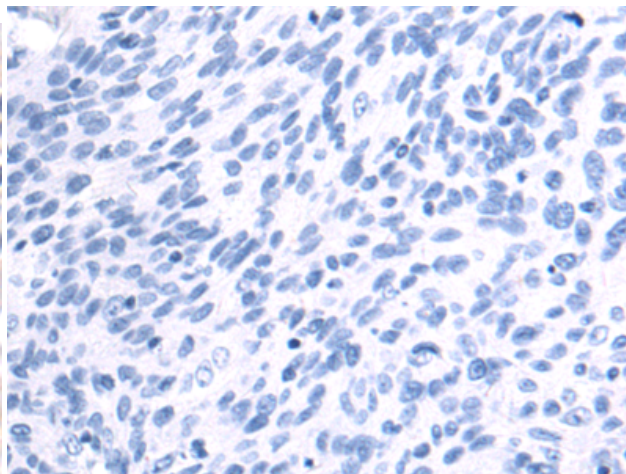
Constituents: PBS (without Mg²⁺ and Ca²⁺), pH 7.4, 150 mM NaCl, 0.05% Sodium Azide and 40% glycerol

Research Areas: Signal Transduction, Neuroscience

Storage & Shipping: Store at -20°C. Avoid repeated freezing and thawing



Immunohistochemistry analysis of paraffin embedded Human cervical cancer tissue using 219933(CHRNA10 Antibody) at a dilution of 1/50(Cell membrane).



In comparison with the IHC on the left, the same paraffin-embedded Human cervical cancer tissue is first treated with the synthetic peptide and then with 219933(Anti-CHRNA10 Antibody) at dilution 1/50.