

CHRAC1 RABBIT PAB

Cat.#: S218493

Product Name: Anti-CHRAC1 Rabbit Polyclonal Antibody

Synonyms: YCLI; CHARC1; CHARC15; CHRAC-1; CHRAC15; CHRAC-15

UNIPROT ID: Q9NRG0 (Gene Accession - BC015891)

Background: CHRAC1 is a histone-fold protein that interacts with other histone-fold proteins to bind DNA in a sequence-independent manner. These histone-fold protein dimers combine within larger enzymatic complexes for DNA transcription, replication, and packaging.

Immunogen: Fusion protein of human CHRAC1

Applications: ELISA, IHC

Recommended Dilutions: IHC: 25-100; ELISA: 5000-10000

Host Species: Rabbit

Clonality: Rabbit Polyclonal

Isotype: Immunogen-specific rabbit IgG

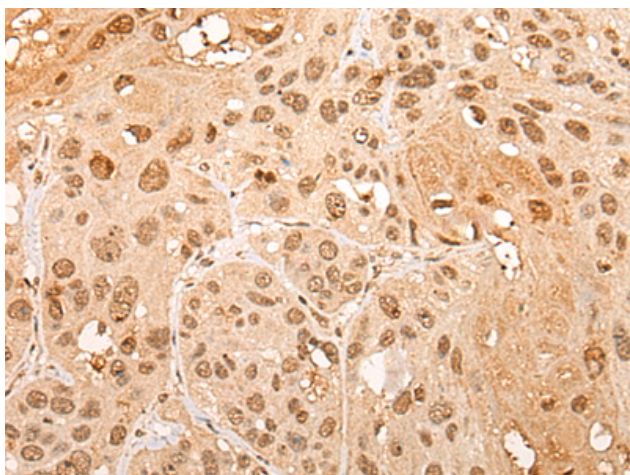
Purification: Antigen affinity purification

Species Reactivity: Human

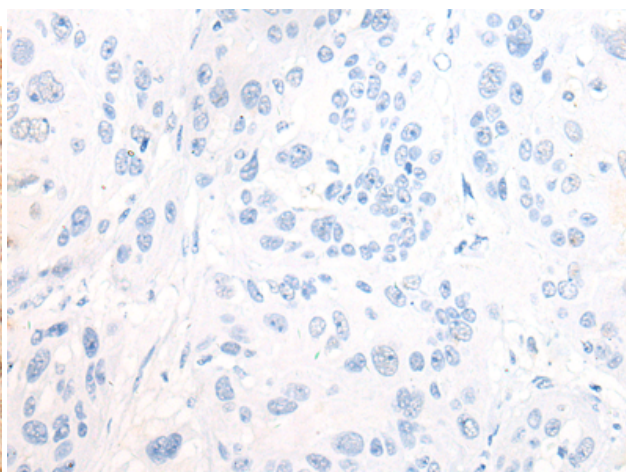
Constituents: PBS (without Mg²⁺ and Ca²⁺), pH 7.4, 150 mM NaCl, 0.05% Sodium Azide and 40% glycerol

Research Areas: Epigenetics and Nuclear Signaling

Storage & Shipping: Store at -20°C. Avoid repeated freezing and thawing



Immunohistochemistry analysis of paraffin embedded Human esophagus cancer tissue using 218493(CHRAC1 Antibody) at a dilution of 1/20(Nucleus).



In comparison with the IHC on the left, the same paraffin-embedded Human esophagus cancer tissue is first treated with the fusion protein and then with 218493(Anti-CHRAC1 Antibody) at dilution 1/20.