

## CHOLINE ACETYLTRANSFERASE RABBIT MAB

**Cat.#:** N262034

**Product Name:** Anti-Choline Acetyltransferase Rabbit Monoclonal Antibody

**Synonyms:** CHAT; Choline O-acetyltransferase; CHOACTase; ChAT; Choline acetylase

**UNIPROT ID:** P28329

**Background:** Catalyzes the reversible synthesis of acetylcholine (ACh) from acetyl CoA and choline at cholinergic synapses.

**Immunogen:** A synthetic peptide of human Choline Acetyltransferase

**Applications:** WB,ICC/IF,IP

**Recommended Dilutions:** WB: 1/500-1/1000 IF: 1/50-1/200 IP: 1/20

**Host Species:** Rabbit

**Clonality:** Rabbit Monoclonal

**Clone ID:** R07-1G8

**MW:** Calculated MW: 83 kDa; Observed MW: 72 kDa

**Isotype:** IgG

**Purification:** Affinity Purified

**Species Reactivity:** Mouse,Rat

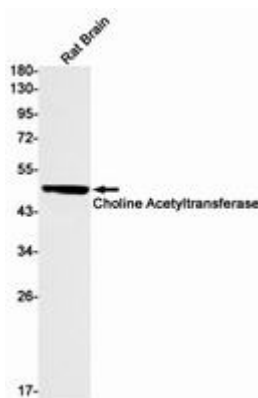
**Conjugation:** Unconjugated

**Modification:** Unmodified

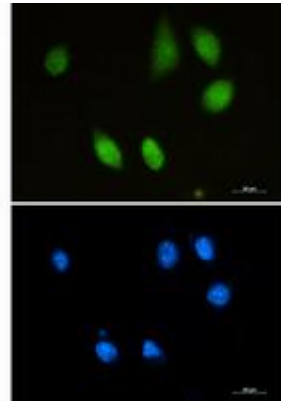
**Constituents:** PBS (without Mg<sup>2+</sup> and Ca<sup>2+</sup>), pH 7.3 containing 50% glycerol, 0.5% BSA and 0.02% sodium azide

**Research Areas:** Neuroscience Cholinergic Neurons

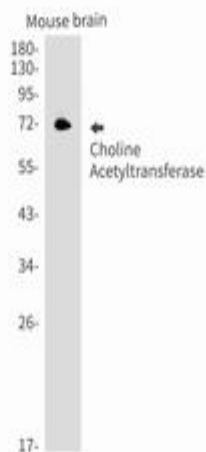
**Storage & Shipping:** Store at -20°C. Avoid repeated freezing and thawing



Western blot analysis of Choline Acetyltransferase in rat Brain lysates using Choline Acetyltransferase antibody



Immunocytochemistry analysis of Choline Acetyltransferase (green) in SH-SY5Y using Choline Acetyltransferase antibody, and DAPI (blue).



Western blot analysis of Choline Acetyltransferase in mouse brain lysates using Choline Acetyltransferase antibody.