

CHMP6 RABBIT PAB

Cat.#: S212219

Product Name: Anti-CHMP6 Rabbit Polyclonal Antibody

Synonyms: VPS20

UNIPROT ID: Q96FZ7 (Gene Accession - BC010108)

Background: This gene encodes a member of the chromatin-modifying protein/charged multivesicular body protein family. Proteins in this family are part of the ESCRT-III (endosomal sorting complex required for transport III) which degrades surface receptors, and in biosynthesis of endosomes.

Immunogen: Fusion protein of human CHMP6

Applications: ELISA, WB, IHC

Recommended Dilutions: IHC: 50-100;WB: 500-2000;ELISA: 5000-10000

Host Species: Rabbit

Clonality: Rabbit Polyclonal

Isotype: Immunogen-specific rabbit IgG

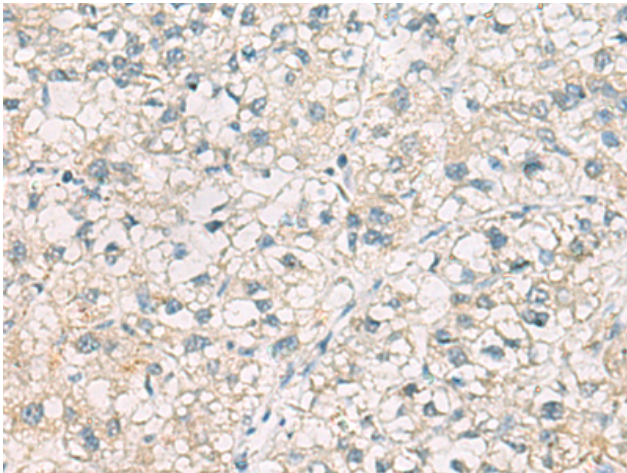
Purification: Antigen affinity purification

Species Reactivity: Human, Mouse

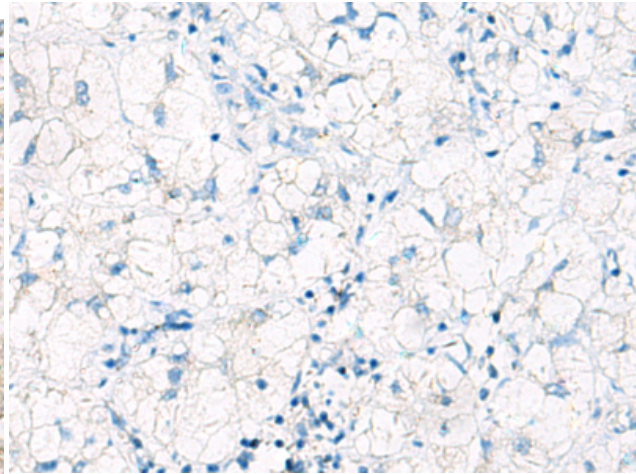
Constituents: PBS (without Mg²⁺ and Ca²⁺), pH 7.4, 150 mM NaCl, 0.05% Sodium Azide and 40% glycerol

Research Areas: Signal Transduction

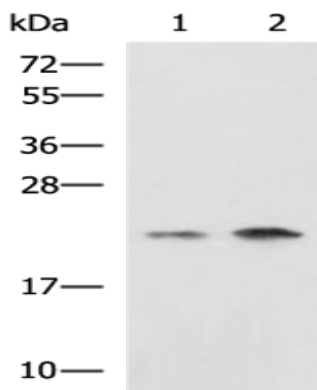
Storage & Shipping: Store at -20°C. Avoid repeated freezing and thawing



Immunohistochemistry analysis of paraffin embedded Human liver cancer tissue using 212219(CHMP6 Antibody) at a dilution of 1/65(Cytoplasm).



In comparison with the IHC on the left, the same paraffin-embedded Human liver cancer tissue is first treated with the fusion protein and then with 212219(Anti-CHMP6 Antibody) at dilution 1/65.



Gel: 12%SDS-PAGE, Lysate: 40 µg;
Lane 1-2: Jurkat, Raji cell lysates;
Primary antibody: 212219(CHMP6 Antibody) at dilution 1/1000;
Secondary antibody: HRP-conjugated Goat anti rabbit IgG at 1/5000 dilution;
Exposure time: 1 minute