

## CHK2 RABBIT PAB

**Cat.#:** N225673

**Product Name:** Anti-Chk2 Rabbit pAb

**Synonyms:** CHEK2; CDS1; CHK2; RAD53; Serine/threonine-protein kinase Chk2; CHK2 checkpoint homolog; Cds1 homolog; Hucds1; hCds1; Checkpoint kinase 2

**UNIPROT ID:** O96017

**Background:** These are known to be preferred sites for phosphorylation by ATM/ATR kinases. After DNA damage by ionizing radiation (IR), UV irradiation, or hydroxyurea treatment, Thr68 and other sites in this region become phosphorylated by ATM/ATR. The SQ/TQ cluster domain, therefore, seems to have a regulatory function.

**Immunogen:** A synthesized peptide derived from human Chk2

**Applications:** WB,IHC-P,ICC/IF,IP

**Recommended Dilutions:** WB: 1/500-1/1000 IHC: 1/50-1/100 IF: 1/50-1/200 IP: 1/20

**Host Species:** Rabbit

**Clonality:** Rabbit Polyclonal

**Clone ID:** -

**MW:** Calculated MW: 61 kDa; Observed MW: 61 kDa

**Isotype:** IgG

**Purification:** Affinity Chromatography

**Species Reactivity:** Human

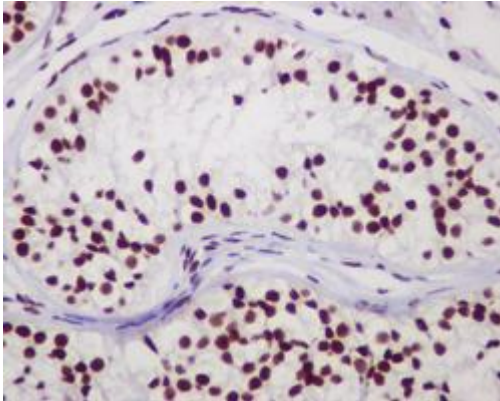
**Conjugation:** Unconjugated

**Modification:** Unmodified

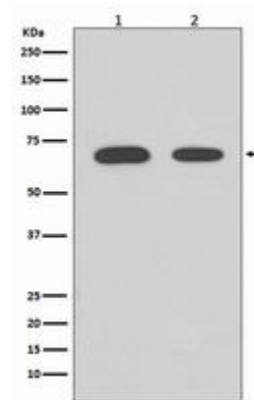
**Constituents:** PBS (without Mg<sup>2+</sup> and Ca<sup>2+</sup>), pH 7.3 containing 50% glycerol, 0.5% BSA and 0.02% sodium azide

**Research Areas:** Epigenetics and Nuclear Signaling

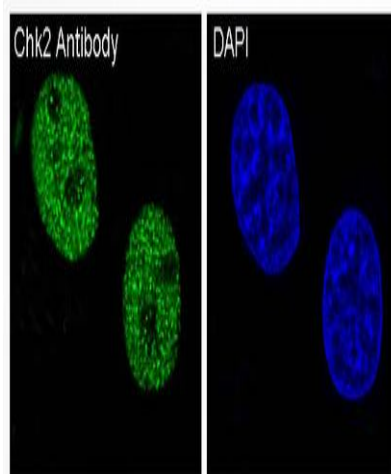
**Storage & Shipping:** Store at -20°C. Avoid repeated freezing and thawing



Immunohistochemistry analysis of paraffin-embedded Human testis using Chk2 antibody. High-pressure and temperature Sodium Citrate pH 6.0 was used for antigen retrieval.



Western blot analysis of Chk2 in (1) HeLa lysates; (2) 293T lysates using Chk2 antibody.



Immunofluorescence analysis of Chk2 in HeLa using Chk2 antibody.