

CHI3L2 RABBIT PAB

Cat.#: S218486

Product Name: Anti-CHI3L2 Rabbit Polyclonal Antibody

Synonyms: CHIL2; YKL39; YKL-39

UNIPROT ID: Q15782 (Gene Accession - BC011460)

Background: The protein encoded by this gene is similar to bacterial chitinases but lacks chitinase activity. The encoded protein is secreted and is involved in cartilage biogenesis. Several transcript variants encoding different isoforms have been found for this gene.

Immunogen: Fusion protein of human CHI3L2

Applications: ELISA, IHC

Recommended Dilutions: IHC: 25-100; ELISA: 5000-10000

Host Species: Rabbit

Clonality: Rabbit Polyclonal

Isotype: Immunogen-specific rabbit IgG

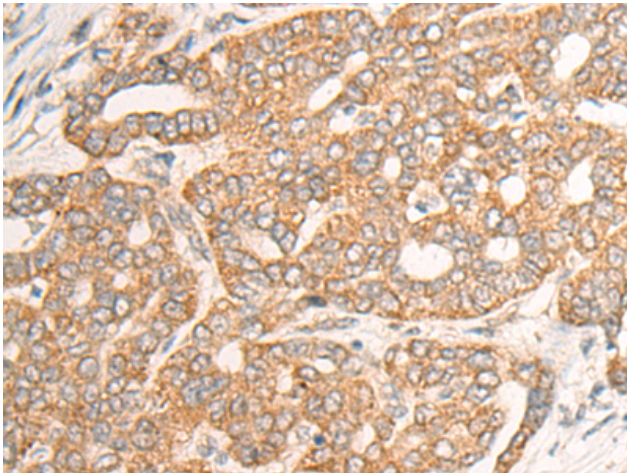
Purification: Antigen affinity purification

Species Reactivity: Human

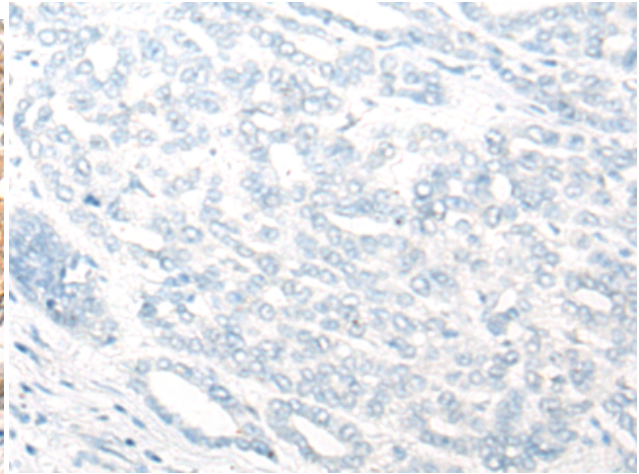
Constituents: PBS (without Mg²⁺ and Ca²⁺), pH 7.4, 150 mM NaCl, 0.05% Sodium Azide and 40% glycerol

Research Areas: Stem Cells

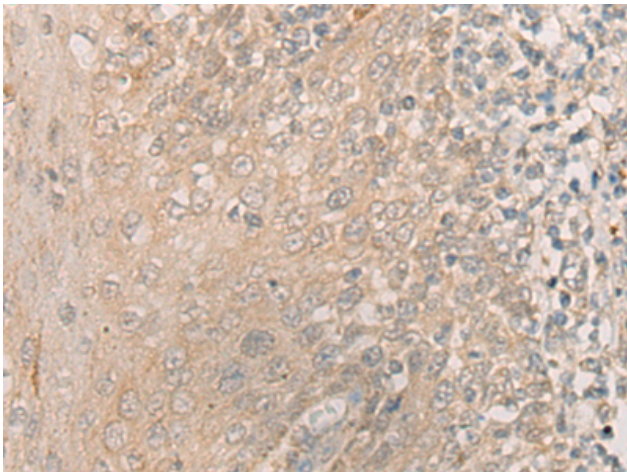
Storage & Shipping: Store at -20°C. Avoid repeated freezing and thawing



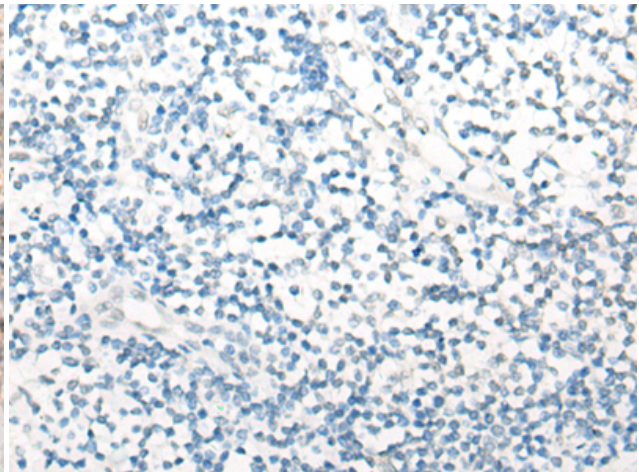
Immunohistochemistry analysis of paraffin embedded Human liver cancer tissue using 218486(CHI3L2 Antibody) at a dilution of 1/35(Cytoplasm).



In comparison with the IHC on the left, the same paraffin-embedded Human liver cancer tissue is first treated with the fusion protein and then with 218486(Anti-CHI3L2 Antibody) at dilution 1/35.



The image on the left is immunohistochemistry of paraffin-embedded Human tonsil tissue using 218486(Anti-CHI3L2 Antibody) at a dilution of 1/35.



In comparison with the IHC on the left, the same paraffin-embedded Human tonsil tissue is first treated with fusion protein and then with D224538(Anti-CHI3L2 Antibody) at dilution 1/35.