

## CHCHD3 RABBIT PAB

**Cat.#:** S218482

**Product Name:** Anti-CHCHD3 Rabbit Polyclonal Antibody

**Synonyms:** Mic19; MINOS3; PPP1R22

**UNIPROT ID:** Q9NX63 (Gene Accession - BC011596 )

**Background:** The protein encoded by this gene is an inner mitochondrial membrane scaffold protein. Absence of the encoded protein affects the structural integrity of mitochondrial cristae and leads to reductions in ATP production, cell growth, and oxygen consumption. This protein is part of the mitochondrial contact site and cristae organizing system (MICOS). Several transcript variants encoding different isoforms have been found for this gene.

**Immunogen:** Full length fusion protein

**Applications:** ELISA, WB, IHC

**Recommended Dilutions:** IHC: 30-150;WB: 1000-5000;ELISA: 5000-10000

**Host Species:** Rabbit

**Clonality:** Rabbit Polyclonal

**Isotype:** Immunogen-specific rabbit IgG

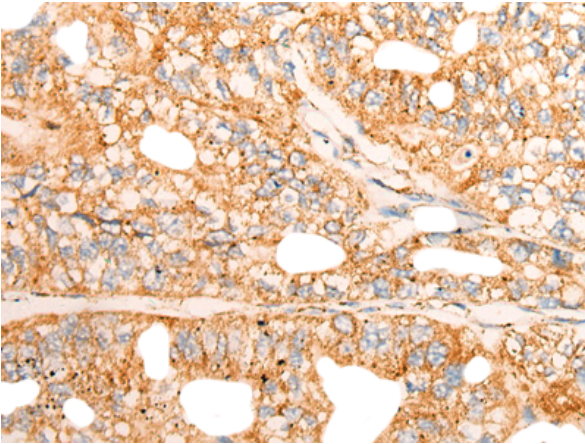
**Purification:** Antigen affinity purification

**Species Reactivity:** Human, Mouse

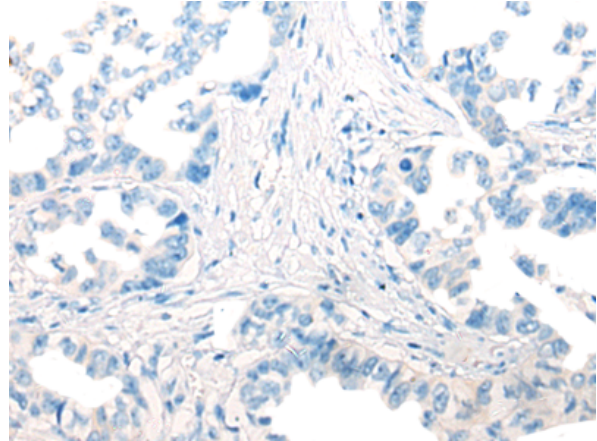
**Constituents:** PBS (without Mg<sup>2+</sup> and Ca<sup>2+</sup>), pH 7.4, 150 mM NaCl, 0.05% Sodium Azide and 40% glycerol

**Research Areas:** Metabolism

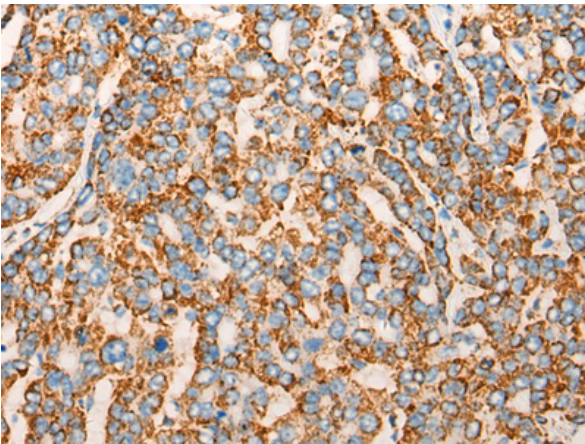
**Storage & Shipping:** Store at -20°C. Avoid repeated freezing and thawing



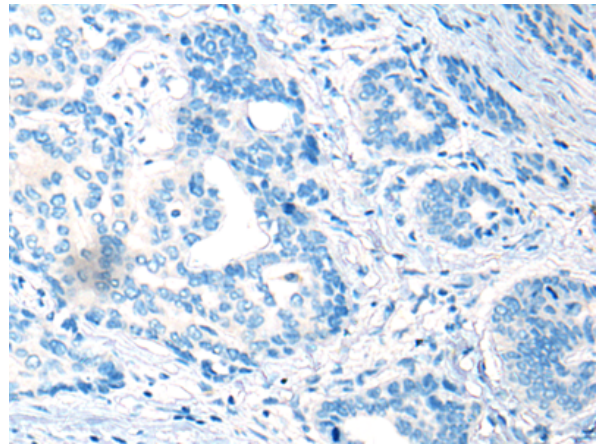
Immunohistochemistry analysis of paraffin embedded Human gastric cancer tissue using 218482(CHCHD3 Antibody) at a dilution of 1/45(Cytoplasm).



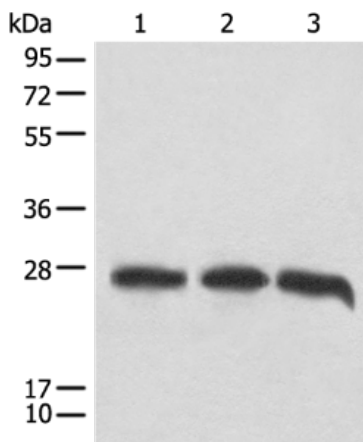
In comparison with the IHC on the left, the same paraffin-embedded Human gastric cancer tissue is first treated with the fusion protein and then with 218482(Anti-CHCHD3 Antibody) at dilution 1/45.



The image on the left is immunohistochemistry of paraffin-embedded Human liver cancer tissue using 218482(Anti-CHCHD3 Antibody) at a dilution of 1/45.



In comparison with the IHC on the left, the same paraffin-embedded Human liver cancer tissue is first treated with fusion protein and then with D224533(Anti-CHCHD3 Antibody) at dilution 1/45.



Gel: 12%SDS-PAGE, Lysate: 40 µg;  
Lane 1-3: HEPG2, A549 and 293T cell lysates;  
Primary antibody: 218482(CHCHD3 Antibody) at dilution 1/1000;  
Secondary antibody: Goat anti rabbit IgG at 1/8000 dilution;  
Exposure time: 5 seconds



# Product Description

Pioneering GTPase and Oncogene Product Development since 2010

---