

CGA RABBIT PAB

Cat.#: S217281

Product Name: Anti-CGA Rabbit Polyclonal Antibody

Synonyms: HCG; LHA; FSHA; GPH α ; TSHA; GPHA1; CG-ALPHA

UNIPROT ID: P01215 (Gene Accession - BC020782)

Background: The four human glycoprotein hormones chorionic gonadotropin (CG), luteinizing hormone (LH), follicle stimulating hormone (FSH), and thyroid stimulating hormone (TSH) are dimers consisting of alpha and beta subunits that are associated noncovalently. The alpha subunits of these hormones are identical, however, their beta chains are unique and confer biological specificity. The protein encoded by this gene is the alpha subunit and belongs to the glycoprotein hormones alpha chain family. Two transcript variants encoding different isoforms have been found for this gene.

Immunogen: Fusion protein of human CGA

Applications: ELISA, WB, IHC

Recommended Dilutions: IHC: 50-200;WB: 500-2000;ELISA: 5000-10000

Host Species: Rabbit

Clonality: Rabbit Polyclonal

Isotype: Immunogen-specific rabbit IgG

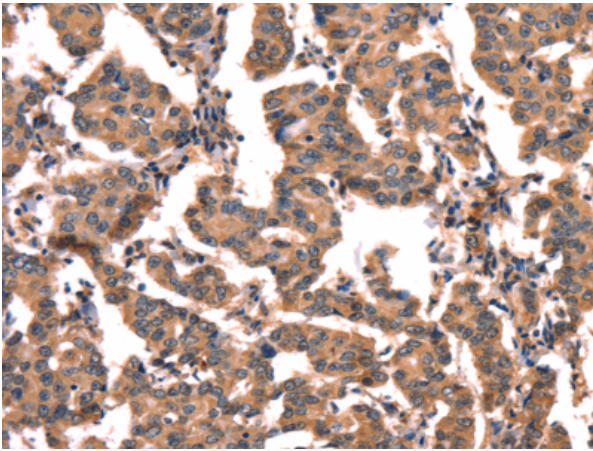
Purification: Antigen affinity purification

Species Reactivity: Human

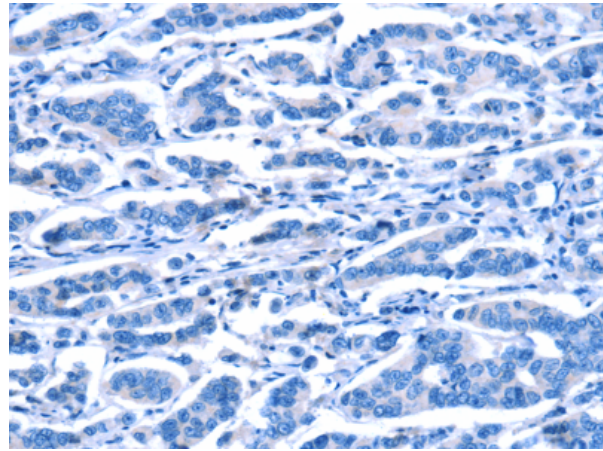
Constituents: PBS (without Mg²⁺ and Ca²⁺), pH 7.4, 150 mM NaCl, 0.05% Sodium Azide and 40% glycerol

Research Areas: Signal Transduction, Cancer, Metabolism, Developmental Biology

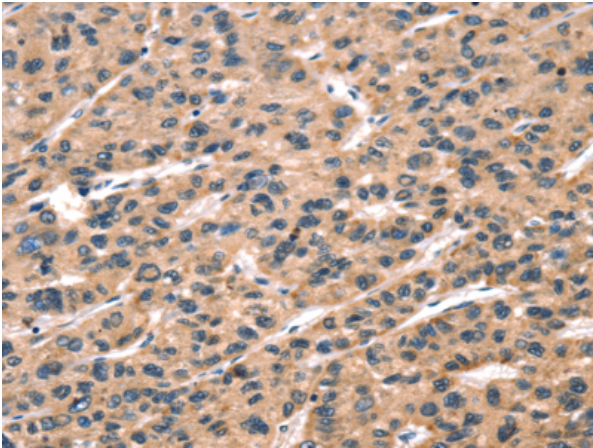
Storage & Shipping: Store at -20°C. Avoid repeated freezing and thawing



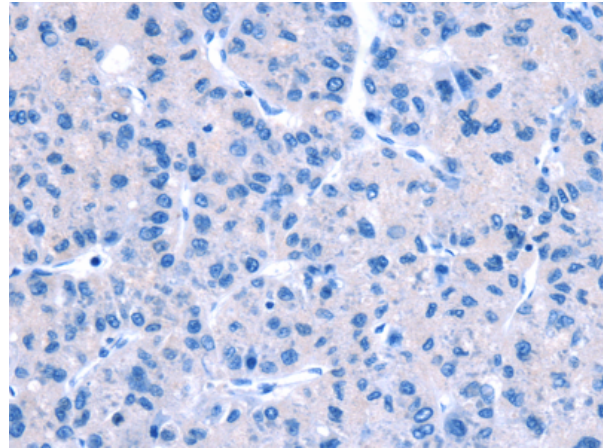
Immunohistochemistry analysis of paraffin embedded Human breast cancer tissue using 217281(CGA Antibody) at a dilution of 1/65(Cytoplasm).



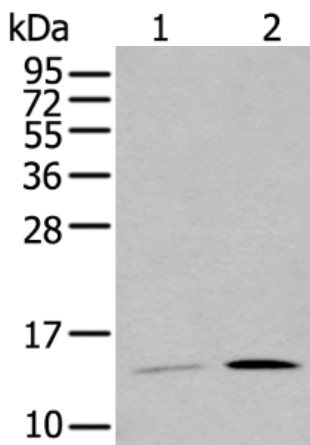
In comparison with the IHC on the left, the same paraffin-embedded Human breast cancer tissue is first treated with the fusion protein and then with 217281(Anti-CGA Antibody) at dilution 1/65.



The image on the left is immunohistochemistry of paraffin-embedded Human liver cancer tissue using 217281(Anti-CGA Antibody) at a dilution of 1/65.



In comparison with the IHC on the left, the same paraffin-embedded Human liver cancer tissue is first treated with fusion protein and then with D222104(Anti-CGA Antibody) at dilution 1/65.



Gel: 12%SDS-PAGE, Lysate: 40 µg;
Lane 1-2: HepG2 and 231 cell lysates;
Primary antibody: 217281(CGA Antibody) at dilution 1/650;
Secondary antibody: Goat anti rabbit IgG at 1/8000 dilution;
Exposure time: 1 minute



Product Description

Pioneering GTPase and Oncogene Product Development since 2010
