

CFAP47 RABBIT PAB

Cat.#: S218912

Product Name: Anti-CFAP47 Rabbit Polyclonal Antibody

Synonyms: CHDC2; CXorf22; CXorf30; CXorf59

UNIPROT ID: Q6ZTR5 (Gene Accession - BC027936)

Background: The function of this protein remains unknown.

Immunogen: Fusion protein of human CFAP47

Applications: ELISA, IHC

Recommended Dilutions: IHC: 100-300; ELISA: 5000-10000

Host Species: Rabbit

Clonality: Rabbit Polyclonal

Isotype: Immunogen-specific rabbit IgG

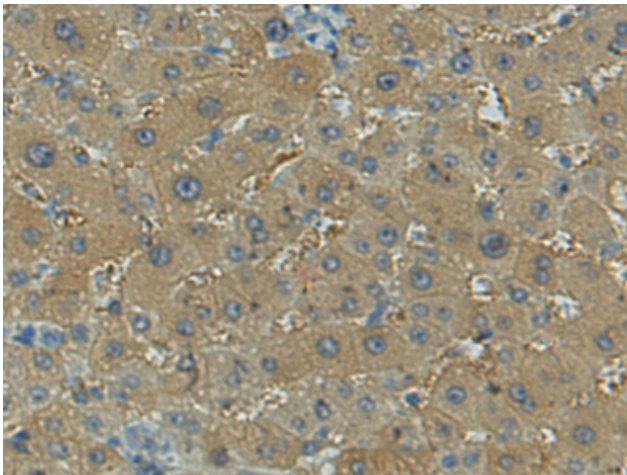
Purification: Antigen affinity purification

Species Reactivity: Human

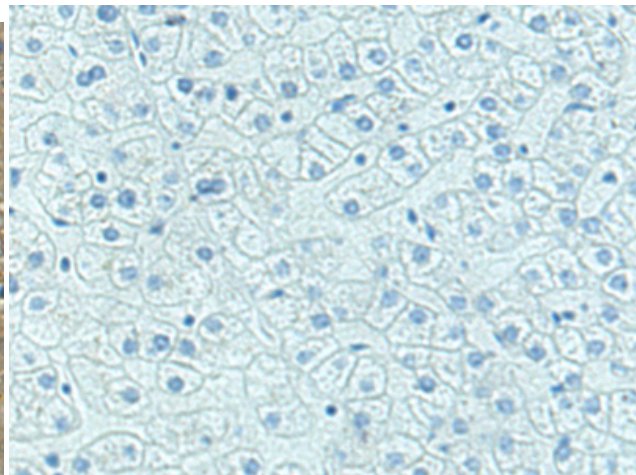
Constituents: PBS (without Mg²⁺ and Ca²⁺), pH 7.4, 150 mM NaCl, 0.05% Sodium Azide and 40% glycerol

Research Areas: Cell Biology

Storage & Shipping: Store at -20°C. Avoid repeated freezing and thawing



Immunohistochemistry analysis of paraffin embedded Human liver cancer tissue using 218912 (CFAP47 Antibody) at a dilution of 1/90 (Cytoplasm).



In comparison with the IHC on the left, the same paraffin-embedded Human liver cancer tissue is first treated with the fusion protein and then with 218912 (Anti-CFAP47 Antibody) at dilution 1/90.