

CETN2 RABBIT PAB

Cat.#: S218470

Product Name: Anti-CETN2 Rabbit Polyclonal Antibody

Synonyms: CALT; CEN2

UNIPROT ID: P41208 (Gene Accession - BC005334)

Background: Caltractin belongs to a family of calcium-binding proteins and is a structural component of the centrosome. The high level of conservation from algae to humans and its association with the centrosome suggested that caltractin plays a fundamental role in the structure and function of the microtubule-organizing center, possibly required for the proper duplication and segregation of the centrosome.

Immunogen: Fusion protein of human CETN2

Applications: ELISA, IHC

Recommended Dilutions: IHC: 200-400; ELISA: 5000-10000

Host Species: Rabbit

Clonality: Rabbit Polyclonal

Isotype: Immunogen-specific rabbit IgG

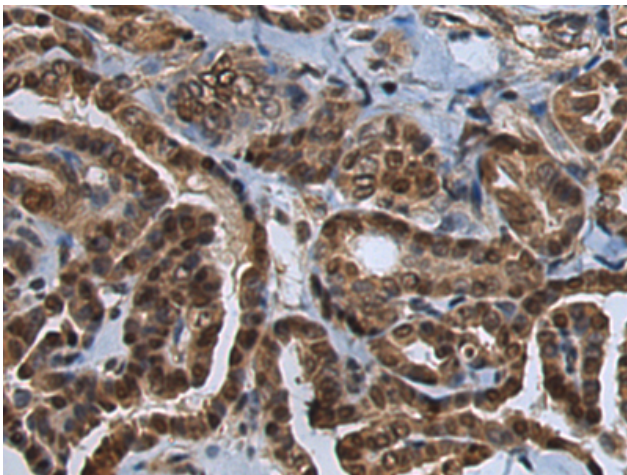
Purification: Antigen affinity purification

Species Reactivity: Human, Mouse

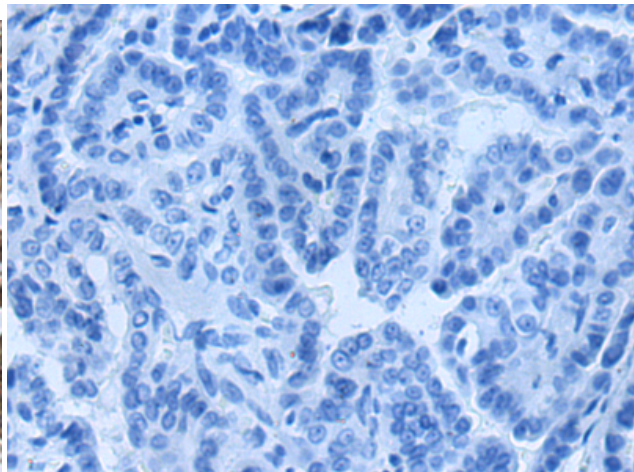
Constituents: PBS (without Mg²⁺ and Ca²⁺), pH 7.4, 150 mM NaCl, 0.05% Sodium Azide and 40% glycerol

Research Areas: Signal Transduction, Epigenetics and Nuclear Signaling, Cancer

Storage & Shipping: Store at -20°C. Avoid repeated freezing and thawing



Immunohistochemistry analysis of paraffin embedded Human thyroid cancer tissue using 218470(CETN2 Antibody) at a dilution of 1/200(Cytoplasm and Nucleus).



In comparison with the IHC on the left, the same paraffin-embedded Human thyroid cancer tissue is first treated with the fusion protein and then with 218470(Anti-CETN2 Antibody) at dilution 1/200.