

CERS1 RABBIT PAB

Cat.#: S220668

Product Name: Anti-CERS1 Rabbit Polyclonal Antibody

Synonyms: EPM8; GDF1; LAG1; UOG1; GDF-1; LASS1

UNIPROT ID: P27544 (Gene Accession - NP_067090)

Background: This gene encodes a ceramide synthase enzyme, which catalyzes the synthesis of ceramide, the hydrophobic moiety of sphingolipids. The encoded enzyme synthesizes 18-carbon (C18) ceramide in brain neurons. Elevated expression of this gene may be associated with increased longevity, while decreased expression of this gene may be associated with myoclonus epilepsy with dementia in human patients. This protein is transcribed from a monocistronic mRNA as well as a bicistronic mRNA, which also encodes growth differentiation factor 1.

Immunogen: Synthetic peptide of human CERS1

Applications: ELISA, WB, IHC

Recommended Dilutions: IHC: 50-200;WB: 500-2000;ELISA: 5000-10000

Host Species: Rabbit

Clonality: Rabbit Polyclonal

Isotype: Immunogen-specific rabbit IgG

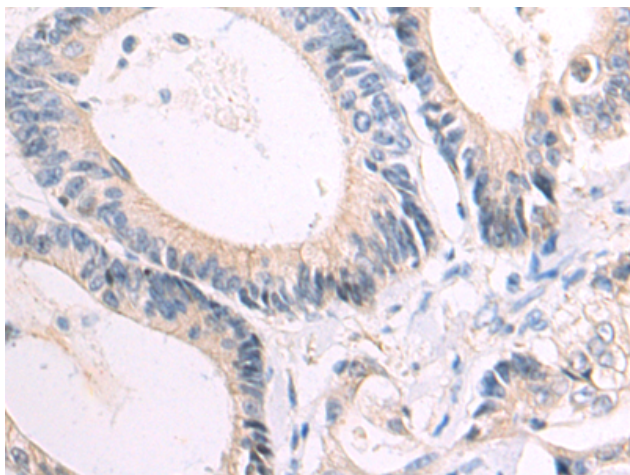
Purification: Antigen affinity purification

Species Reactivity: Human, Mouse

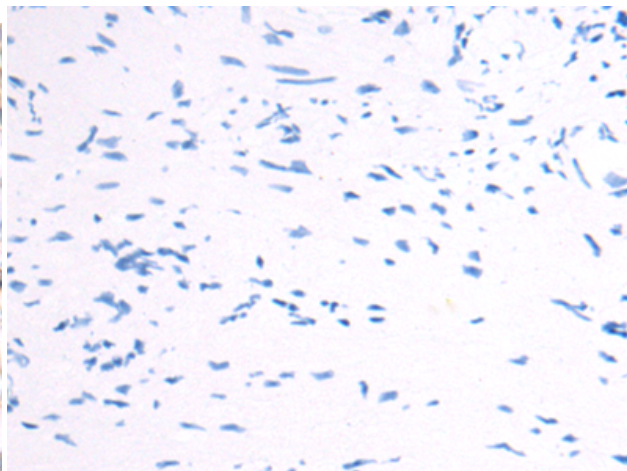
Constituents: PBS (without Mg²⁺ and Ca²⁺), pH 7.4, 150 mM NaCl, 0.05% Sodium Azide and 40% glycerol

Research Areas: Metabolism, Cancer

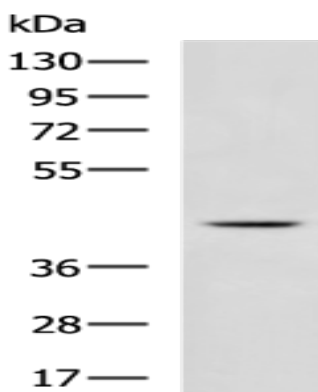
Storage & Shipping: Store at -20°C. Avoid repeated freezing and thawing



Immunohistochemistry analysis of paraffin embedded Human prostate cancer tissue using 220668 (CERS1 Antibody) at a dilution of 1/50 (Cytoplasm).



In comparison with the IHC on the left, the same paraffin-embedded Human prostate cancer tissue is first treated with the synthetic peptide and then with 220668 (Anti-CERS1 Antibody) at dilution 1/50.



Gel: 8% SDS-PAGE, Lysate: 40 μ g;
Lane: A172 cell lysate;
Primary antibody: 220668 (CERS1 Antibody) at dilution 1/1000;
Secondary antibody: HRP-conjugated Goat anti rabbit IgG at 1/5000 dilution;
Exposure time: 1 minute