

## CEP89 RABBIT PAB

**Cat.#:** S221724

**Product Name:** Anti-CEP89 Rabbit Polyclonal Antibody

**Synonyms:** CEP123; CCDC123

**UNIPROT ID:** Q96ST8 (Gene Accession - NP\_116205 )

**Background:** Required for ciliogenesis. Also plays a role in mitochondrial metabolism where it may modulate complex IV activity.

**Immunogen:** Synthetic peptide of human CEP89

**Applications:** ELISA, IHC

**Recommended Dilutions:** IHC: Oct-50; ELISA: 5000-10000

**Host Species:** Rabbit

**Clonality:** Rabbit Polyclonal

**Isotype:** Immunogen-specific rabbit IgG

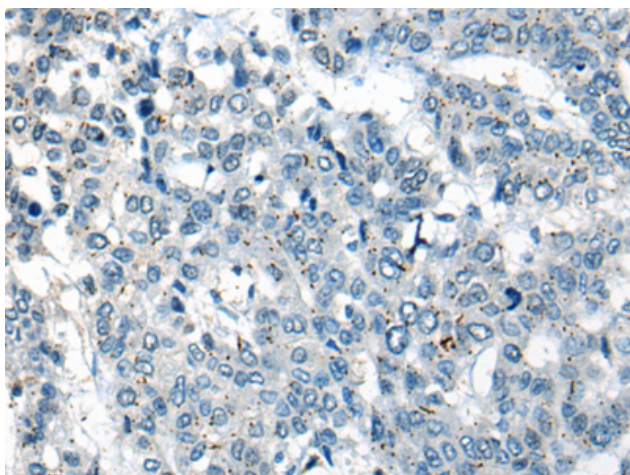
**Purification:** Antigen affinity purification

**Species Reactivity:** Human, Mouse

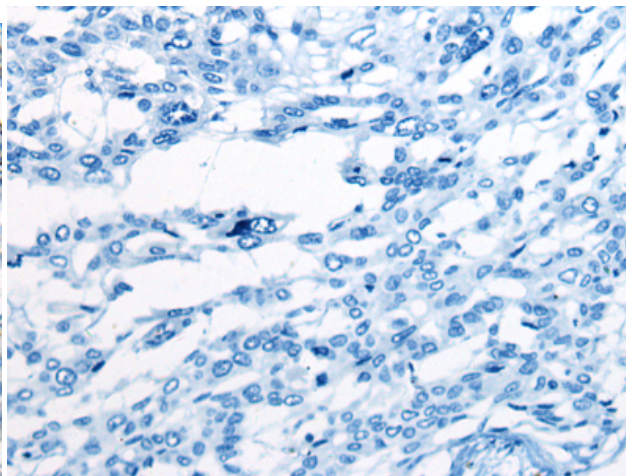
**Constituents:** PBS (without Mg<sup>2+</sup> and Ca<sup>2+</sup>), pH 7.4, 150 mM NaCl, 0.05% Sodium Azide and 40% glycerol

**Research Areas:** Cancer

**Storage & Shipping:** Store at -20°C. Avoid repeated freezing and thawing



Immunohistochemistry analysis of paraffin embedded Human liver cancer tissue using 221724(CEP89 Antibody) at a dilution of 1/20(Cytoplasm).



In comparison with the IHC on the left, the same paraffin-embedded Human liver cancer tissue is first treated with the synthetic peptide and then with 221724(Anti-CEP89 Antibody) at dilution 1/20.