

CELLUBREVIN RABBIT MAB

Cat.#: N263267

Product Name: Anti-Cellubrevin Rabbit Monoclonal Antibody

Synonyms: CEB; Cellubrevin; Synaptobrevin 3; VAMP3

UNIPROT ID: Q15836

Background: SNARE involved in vesicular transport from the late endosomes to the trans-Golgi network.

Immunogen: Recombinant protein of human Cellubrevin

Applications: WB, ICC/IF, IP

Recommended Dilutions: WB: 1/500-1/1000 IF: 1/50-1/200 IP: 1/20

Host Species: Rabbit

Clonality: Rabbit Monoclonal

Clone ID: R01-8D3

MW: Calculated MW: 11 kDa; Observed MW: 11 kDa

Isotype: IgG

Purification: Affinity Purified

Species Reactivity: Human

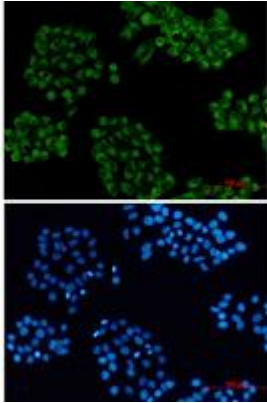
Conjugation: Unconjugated

Modification: Unmodified

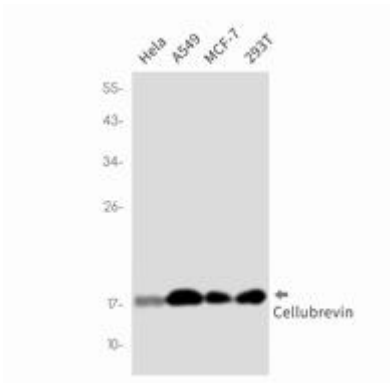
Constituents: PBS (without Mg²⁺ and Ca²⁺), pH 7.3 containing 50% glycerol, 0.5% BSA and 0.02% sodium azide

Research Areas: Signal Transduction

Storage & Shipping: Store at -20°C. Avoid repeated freezing and thawing



Immunocytochemistry analysis of Cellubrevin (green) in hela using Cellubrevin antibody, and DAPI(blue)



Western blot analysis of ubrevin in HeLa, A549, MCF-7, 293T lysates using ubrevin antibody.