

## CELF5 RABBIT PAB

**Cat.#:** S221624

**Product Name:** Anti-CELF5 Rabbit Polyclonal Antibody

**Synonyms:** CELF-5; BRUNOL5; BRUNOL-5

**UNIPROT ID:** Q8N6W0 (Gene Accession - NP\_068757 )

**Background:** This gene encodes a member of the the CELF/BRUNOL protein family, which contain two N-terminal RNA recognition motif (RRM) domains, one C-terminal RRM domain, and a divergent segment of 160-230 aa between the second and third RRM domains. Members of this protein family regulate pre-mRNA alternative splicing and may also be involved in mRNA editing and translation. Alternatively spliced transcript variants have been found for this gene.

**Immunogen:** Synthetic peptide of human CELF5

**Applications:** ELISA, IHC

**Recommended Dilutions:** IHC: 40-200; ELISA: 5000-10000

**Host Species:** Rabbit

**Clonality:** Rabbit Polyclonal

**Isotype:** Immunogen-specific rabbit IgG

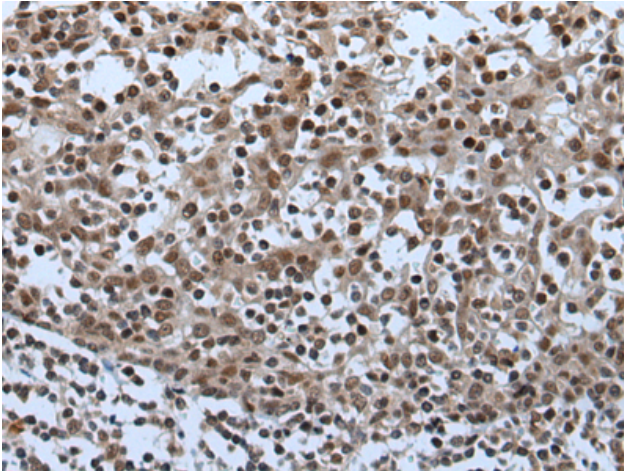
**Purification:** Antigen affinity purification

**Species Reactivity:** Human

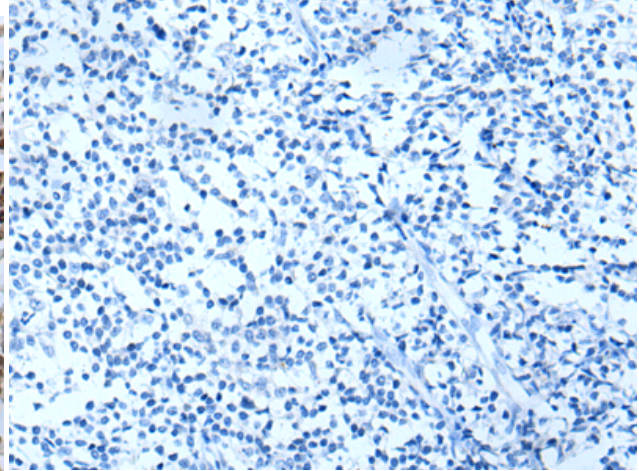
**Constituents:** PBS (without Mg<sup>2+</sup> and Ca<sup>2+</sup>), pH 7.4, 150 mM NaCl, 0.05% Sodium Azide and 40% glycerol

**Research Areas:** Epigenetics and Nuclear Signaling

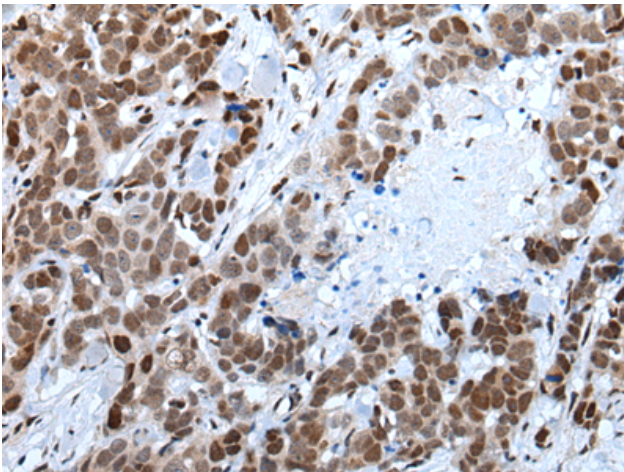
**Storage & Shipping:** Store at -20°C. Avoid repeated freezing and thawing



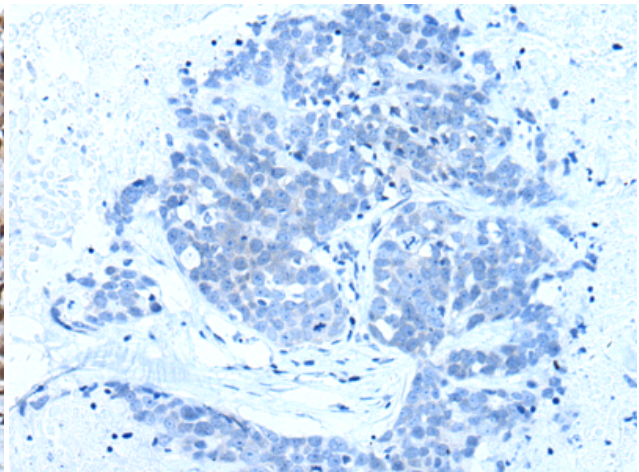
Immunohistochemistry analysis of paraffin embedded Human tonsil tissue using 221624(CELF5 Antibody) at a dilution of 1/65(Cytoplasm and Nucleus).



In comparison with the IHC on the left, the same paraffin-embedded Human tonsil tissue is first treated with the synthetic peptide and then with 221624(Anti-CELF5 Antibody) at dilution 1/65.



The image on the left is immunohistochemistry of paraffin-embedded Human thyroid cancer tissue using 221624(Anti-CELF5 Antibody) at a dilution of 1/65.



In comparison with the IHC on the left, the same paraffin-embedded Human thyroid cancer tissue is first treated with synthetic peptide and then with D263294(Anti-CELF5 Antibody) at dilution 1/65.