

## CEBPA RABBIT PAB

**Cat.#:** S219692

**Product Name:** Anti-CEBPA Rabbit Polyclonal Antibody

**Synonyms:** CEBP; C/EBP-alpha

**UNIPROT ID:** P49715 (Gene Accession - NP\_004355 )

**Background:** This intronless gene encodes a transcription factor that contains a basic leucine zipper (bZIP) domain and recognizes the CCAAT motif in the promoters of target genes. The encoded protein functions in homodimers and also heterodimers with CCAAT/enhancer-binding proteins beta and gamma. Activity of this protein can modulate the expression of genes involved in cell cycle regulation as well as in body weight homeostasis. Mutation of this gene is associated with acute myeloid leukemia. The use of alternative in-frame non-AUG (GUG) and AUG start codons results in protein isoforms with different lengths. Differential translation initiation is mediated by an out-of-frame, upstream open reading frame which is located between the GUG and the first AUG start codons.

**Immunogen:** Synthetic peptide of human CEBPA

**Applications:** ELISA, IHC

**Recommended Dilutions:** IHC: 50-200; ELISA: 5000-10000

**Host Species:** Rabbit

**Clonality:** Rabbit Polyclonal

**Isotype:** Immunogen-specific rabbit IgG

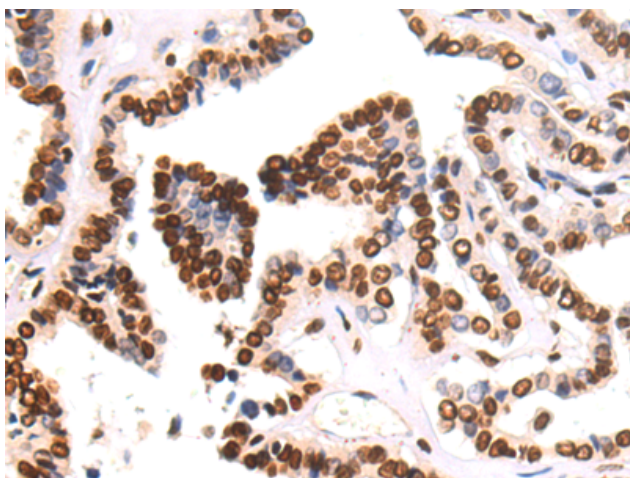
**Purification:** Antigen affinity purification

**Species Reactivity:** Human, Mouse, Rat

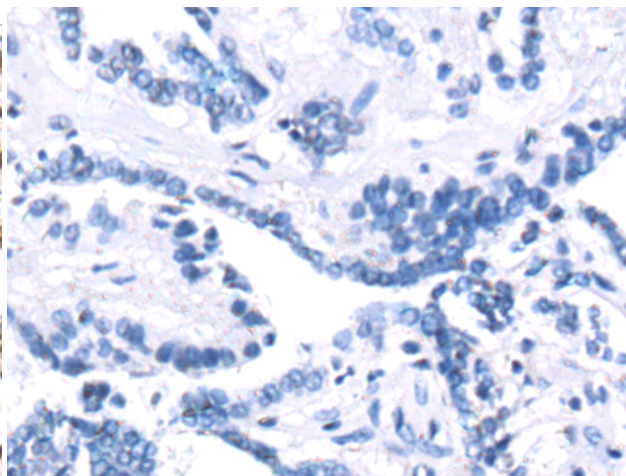
**Constituents:** PBS (without Mg<sup>2+</sup> and Ca<sup>2+</sup>), pH 7.4, 150 mM NaCl, 0.05% Sodium Azide and 40% glycerol

**Research Areas:** Epigenetics and Nuclear Signaling, Metabolism, Cardiovascular

**Storage & Shipping:** Store at -20°C. Avoid repeated freezing and thawing



Immunohistochemistry analysis of paraffin embedded Human thyroid cancer tissue using 219692(CEBPA Antibody) at a dilution of 1/50(Nucleus).



In comparison with the IHC on the left, the same paraffin-embedded Human thyroid cancer tissue is first treated with the synthetic peptide and then with 219692(Anti-CEBPA Antibody) at dilution 1/50.



# Product Description

Pioneering GTPase and Oncogene Product Development since 2010

---