

CEACAM8 RABBIT PAB

Cat.#: S216416

Product Name: Anti-CEACAM8 Rabbit Polyclonal Antibody

Synonyms: CD67; CGM6; CD66b; NCA-95

UNIPROT ID: P31997 (Gene Accession - BC026263)

Background: Cell surface glycoprotein that plays a role in cell adhesion in a calcium-independent manner (PubMed:8776764, PubMed:2022629, PubMed:11590190). Mediates heterophilic cell adhesion with other carcinoembryonic antigen-related cell adhesion molecules, such as CEACAM6 (PubMed:8776764, PubMed:2022629, PubMed:11590190). Heterophilic interaction with CEACAM8 occurs in activated neutrophils (PubMed:8776764). By probing white blood cell cDNA libraries with tumor nonspecific crossreacting antigen, Arakawa et al. (1990) isolated a cDNA encoding CEACAM8, which they called NCA-W272. The deduced 349-amino acid protein contains 11 potential N-glycosylation sites and 4 cysteines expected to form 2 intramolecular disulfide linkages. It also has a signal peptide and several domains similar to those of other CEA family proteins, such as CEACAM1 (109770). Immunoblot analysis showed expression of a 70-kD protein that was reduced to a 37-kD major protein and a 34-kD minor protein in the presence of a glycosylation inhibitor.

Immunogen: Fusion protein of human CEACAM8

Applications: ELISA, WB, IHC

Recommended Dilutions: IHC: 50-100;WB: 200-1000;ELISA: 5000-10000

Host Species: Rabbit

Clonality: Rabbit Polyclonal

Isotype: Immunogen-specific rabbit IgG

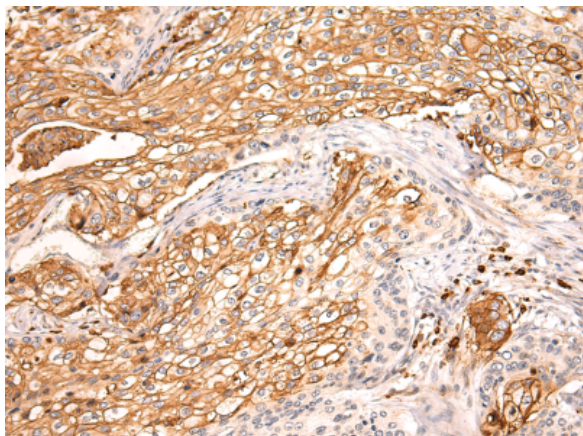
Purification: Antigen affinity purification

Species Reactivity: Human

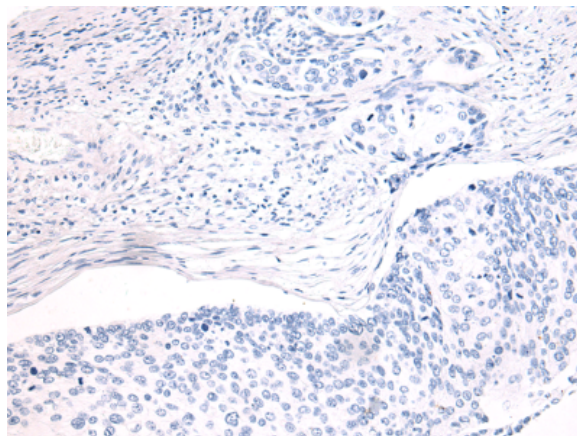
Constituents: PBS (without Mg²⁺ and Ca²⁺), pH 7.4, 150 mM NaCl, 0.05% Sodium Azide and 40% glycerol

Research Areas: Immunology

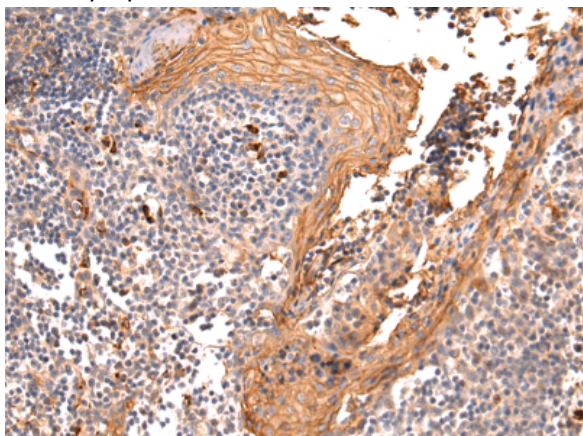
Storage & Shipping: Store at -20°C. Avoid repeated freezing and thawing



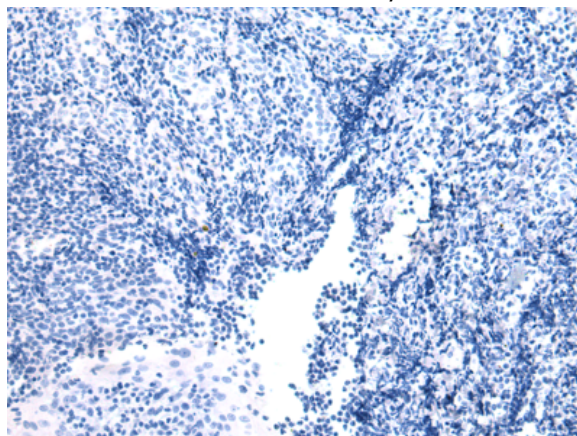
Immunohistochemistry analysis of paraffin embedded Human cervical cancer tissue using 216416(CEACAM8 Antibody) at a dilution of 1/50(Cytoplasm and Cell membrane).



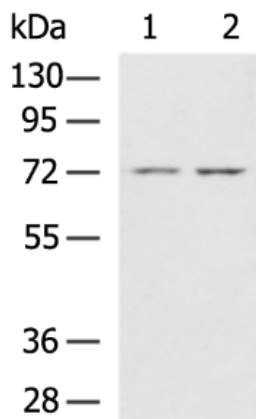
In comparison with the IHC on the left, the same paraffin-embedded Human cervical cancer tissue is first treated with the fusion protein and then with 216416(Anti-CEACAM8 Antibody) at dilution 1/50.



The image on the left is immunohistochemistry of paraffin-embedded Human tonsil tissue using 216416(Anti-CEACAM8 Antibody) at a dilution of 1/50.



In comparison with the IHC on the left, the same paraffin-embedded Human tonsil tissue is first treated with fusion protein and then with D220405(Anti-CEACAM8 Antibody) at dilution 1/50.



Gel: 8%SDS-PAGE, Lysate: 40 µg;
 Lane 1-2: A431 and HepG2 cell lysates;
 Primary antibody: 216416(CEACAM8 Antibody) at dilution 1/500;
 Secondary antibody: HRP-conjugated Goat anti rabbit IgG at 1/5000 dilution;
 Exposure time: 2 minutes



Product Description

Pioneering GTPase and Oncogene Product Development since 2010
