

CEACAM6 RABBIT PAB

Cat.#: S220115

Product Name: Anti-CEACAM6 Rabbit Polyclonal Antibody

Synonyms: NCA; CEAL; CD66c

UNIPROT ID: P40199 (Gene Accession - NP_002474)

Background: Carcinoembryonic antigen (CEA; MIM 114890) is one of the most widely used tumor markers in serum immunoassay determinations of carcinoma. An apparent lack of absolute cancer specificity for CEA probably results in part from the presence in normal and neoplastic tissues of antigens that share antigenic determinants with the 180-kD form of CEA (Barnett et al., 1988 [PubMed 3220478]). For background information on the CEA family of genes, see CEACAM1 (MIM 109770).

Immunogen: Synthetic peptide of human CEACAM6

Applications: ELISA, IHC

Recommended Dilutions: IHC: 50-200; ELISA: 2000-5000

Host Species: Rabbit

Clonality: Rabbit Polyclonal

Isotype: Immunogen-specific rabbit IgG

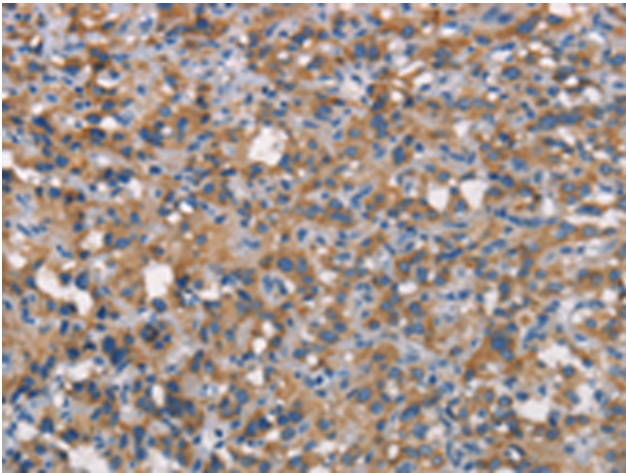
Purification: Antigen affinity purification

Species Reactivity: Human

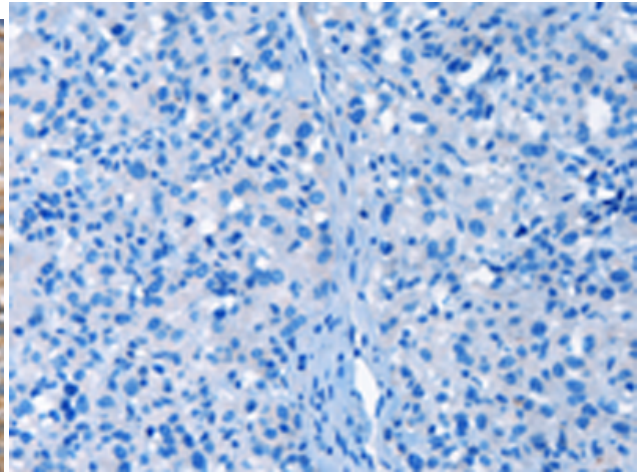
Constituents: PBS (without Mg²⁺ and Ca²⁺), pH 7.4, 150 mM NaCl, 0.05% Sodium Azide and 40% glycerol

Research Areas: Signal Transduction, Cancer

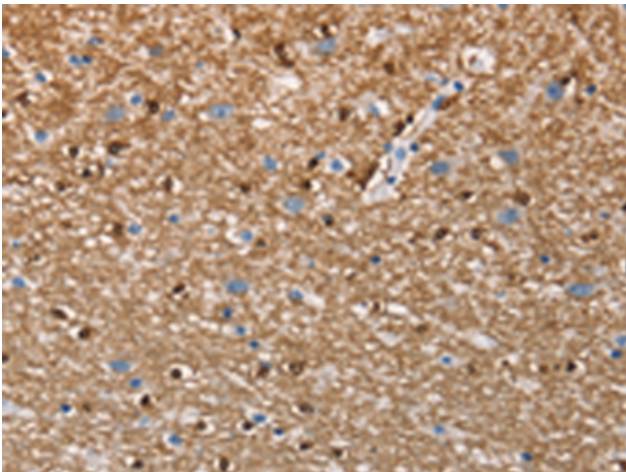
Storage & Shipping: Store at -20°C. Avoid repeated freezing and thawing



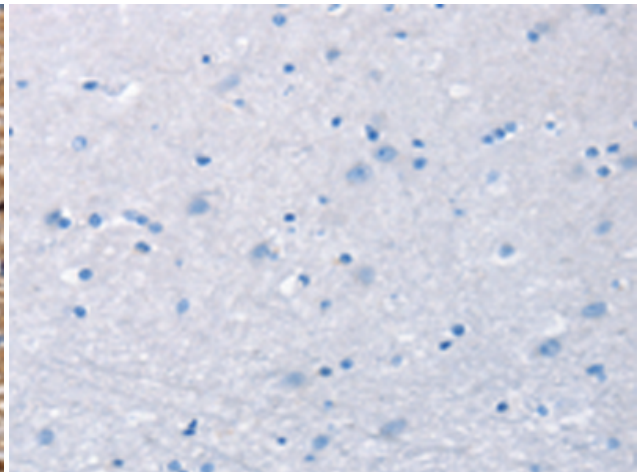
Immunohistochemistry analysis of paraffin embedded Human thyroid cancer tissue using 220115(CEACAM6 Antibody) at a dilution of 1/70(Cytoplasm).



In comparison with the IHC on the left, the same paraffin-embedded Human thyroid cancer tissue is first treated with the synthetic peptide and then with 220115(Anti-CEACAM6 Antibody) at dilution 1/70.



The image on the left is immunohistochemistry of paraffin-embedded Human brain tissue using 220115(Anti-CEACAM6 Antibody) at a dilution of 1/70.



In comparison with the IHC on the left, the same paraffin-embedded Human brain tissue is first treated with synthetic peptide and then with D260976(Anti-CEACAM6 Antibody) at dilution 1/70.