

CEACAM21 RABBIT PAB

Cat.#: S216418

Product Name: Anti-CEACAM21 Rabbit Polyclonal Antibody

Synonyms: CEACAM3, R29124_1

UNIPROT ID: Q3KPI0 (Gene Accession - BC012001)

Background: CEACAM21 is a gene which encodes carcinoembryonic antigen. It belongs to the immunoglobulin superfamily-CEA family. Three isoforms of the human protein are produced by alternative splicing. High levels of expression in hematopoietic system, brain and muscle.

Immunogen: Fusion protein of human CEACAM21

Applications: ELISA, IHC

Recommended Dilutions: IHC: 50-200; ELISA: 2000-5000

Host Species: Rabbit

Clonality: Rabbit Polyclonal

Isotype: Immunogen-specific rabbit IgG

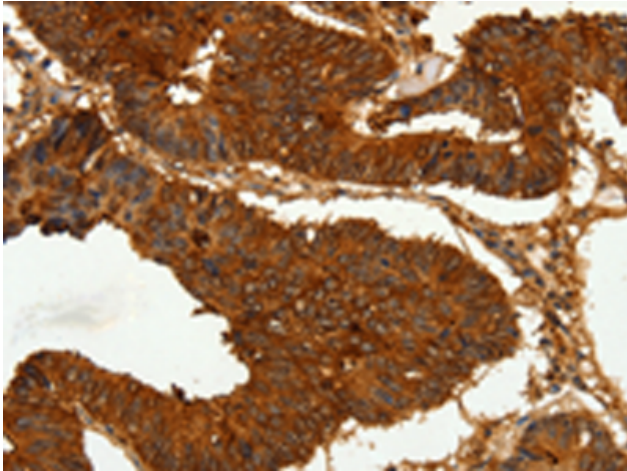
Purification: Antigen affinity purification

Species Reactivity: Human

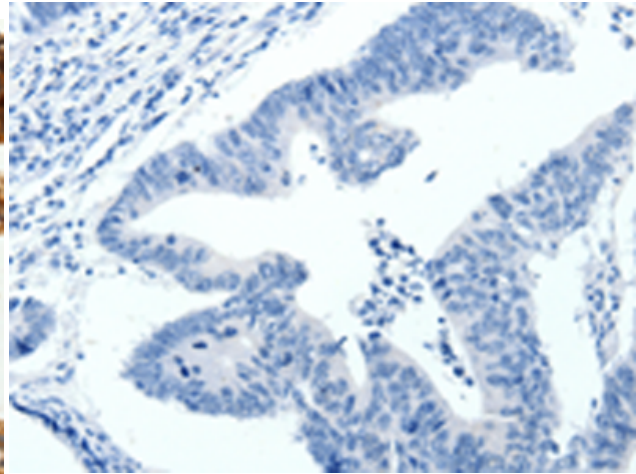
Constituents: PBS (without Mg²⁺ and Ca²⁺), pH 7.4, 150 mM NaCl, 0.05% Sodium Azide and 40% glycerol

Research Areas: Cell Biology

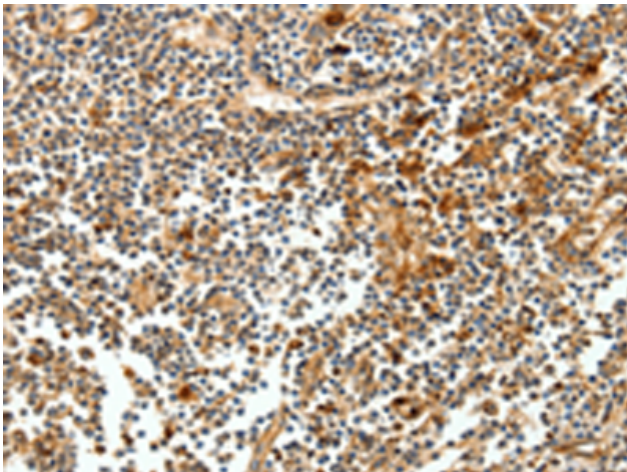
Storage & Shipping: Store at -20°C. Avoid repeated freezing and thawing



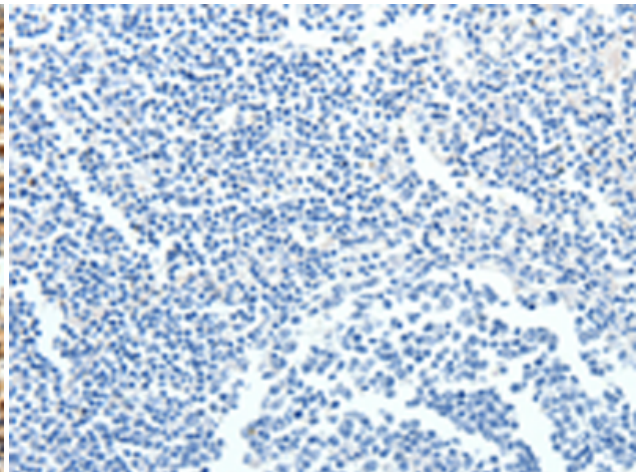
Immunohistochemistry analysis of paraffin embedded Human colon cancer tissue using 216418(CEACAM21 Antibody) at a dilution of 1/60(Cytoplasm, Cell membrane).



In comparison with the IHC on the left, the same paraffin-embedded Human colon cancer tissue is first treated with the fusion protein and then with 216418(Anti-CEACAM21 Antibody) at dilution 1/60.



The image on the left is immunohistochemistry of paraffin-embedded Human tonsil tissue using 216418(Anti-CEACAM21 Antibody) at a dilution of 1/60.



In comparison with the IHC on the left, the same paraffin-embedded Human tonsil tissue is first treated with fusion protein and then with D220409(Anti-CEACAM21 Antibody) at dilution 1/60.