

CDYL2 RABBIT PAB

Cat.#: S218465

Product Name: Anti-CDYL2 Rabbit Polyclonal Antibody

Synonyms: PCCP1

UNIPROT ID: Q8N8U2 (Gene Accession - BC069440)

Background: Chromodomain Y-like protein (CDYL) is a related ubiquitous nuclear protein expressed at moderate levels in most tissues. The gene encoding for the CDYL protein localizes to chromosome 6p25.1. CDYL2 contains 1 chromo domain. The exact function of CDYL2 remains unknown.

Immunogen: Fusion protein of human CDYL2

Applications: ELISA, IHC

Recommended Dilutions: IHC: 20-100; ELISA: 5000-10000

Host Species: Rabbit

Clonality: Rabbit Polyclonal

Isotype: Immunogen-specific rabbit IgG

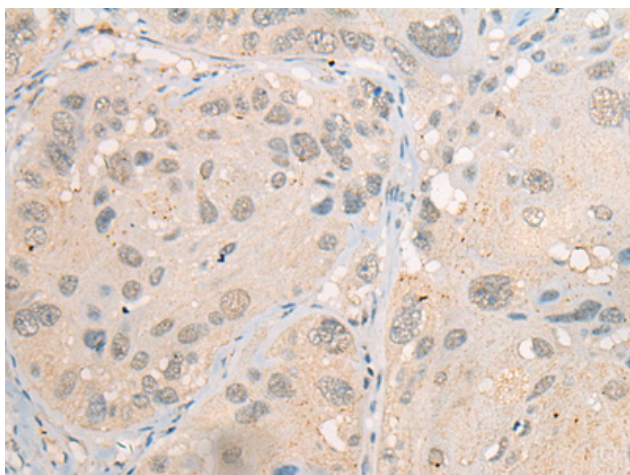
Purification: Antigen affinity purification

Species Reactivity: Human, Mouse

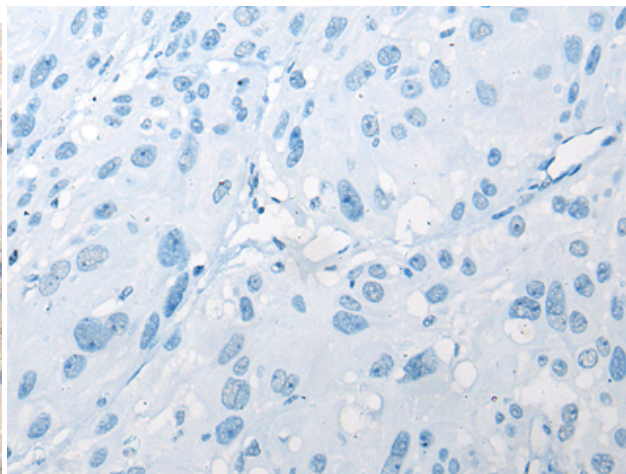
Constituents: PBS (without Mg²⁺ and Ca²⁺), pH 7.4, 150 mM NaCl, 0.05% Sodium Azide and 40% glycerol

Research Areas: Epigenetics and Nuclear Signaling

Storage & Shipping: Store at -20°C. Avoid repeated freezing and thawing



Immunohistochemistry analysis of paraffin embedded Human esophagus cancer tissue using 218465(CDYL2 Antibody) at a dilution of 1/20(Nucleus).



In comparison with the IHC on the left, the same paraffin-embedded Human esophagus cancer tissue is first treated with the fusion protein and then with 218465(Anti-CDYL2 Antibody) at dilution 1/20.