

CDX4 RABBIT PAB

Cat.#: S215608

Product Name: Anti-CDX4 Rabbit Polyclonal Antibody

Synonyms:

UNIPROT ID: O14627 (Gene Accession - NP_005184)

Background: This gene encodes a member of a small subfamily of homeobox containing transcription factors. The encoded protein may regulate homeobox gene expression during anteroposterior patterning and hematopoiesis.

Immunogen: Synthetic peptide of human CDX4

Applications: ELISA, IHC

Recommended Dilutions: IHC: 20-100; ELISA: 5000-10000

Host Species: Rabbit

Clonality: Rabbit Polyclonal

Isotype: Immunogen-specific rabbit IgG

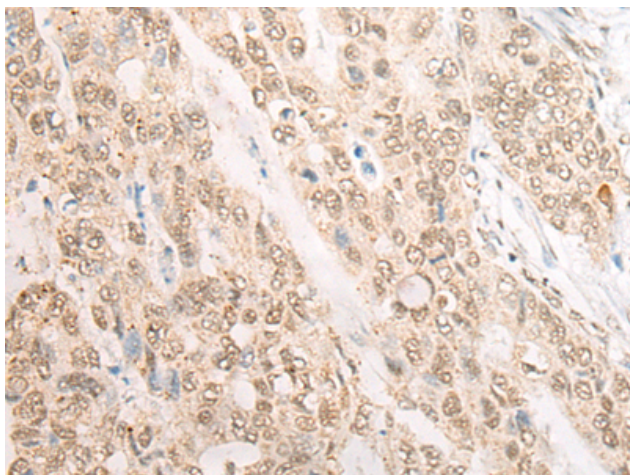
Purification: Antigen affinity purification

Species Reactivity: Human, Mouse

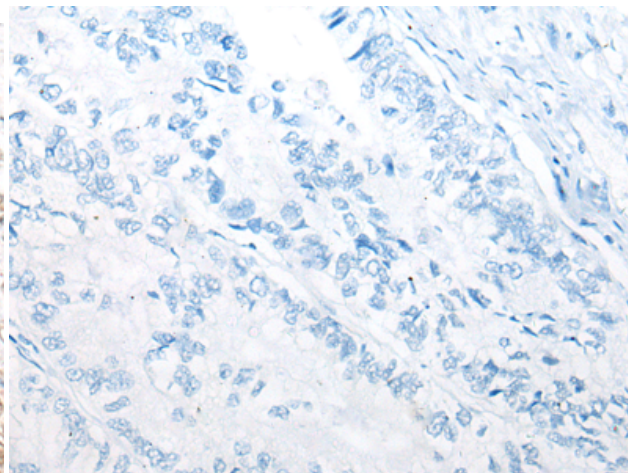
Constituents: PBS (without Mg²⁺ and Ca²⁺), pH 7.4, 150 mM NaCl, 0.05% Sodium Azide and 40% glycerol

Research Areas: Epigenetics and Nuclear Signaling, Stem Cells

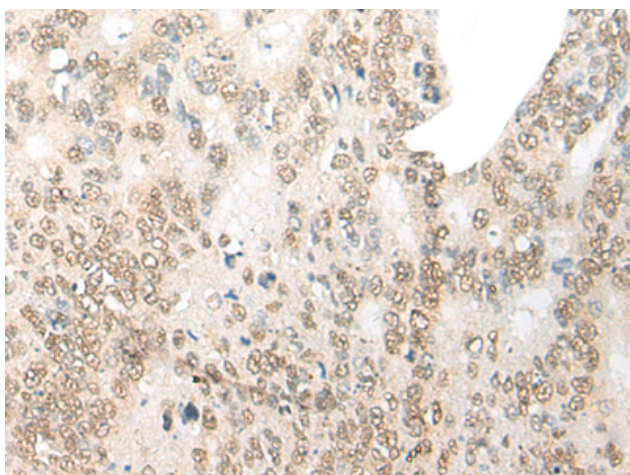
Storage & Shipping: Store at -20°C. Avoid repeated freezing and thawing



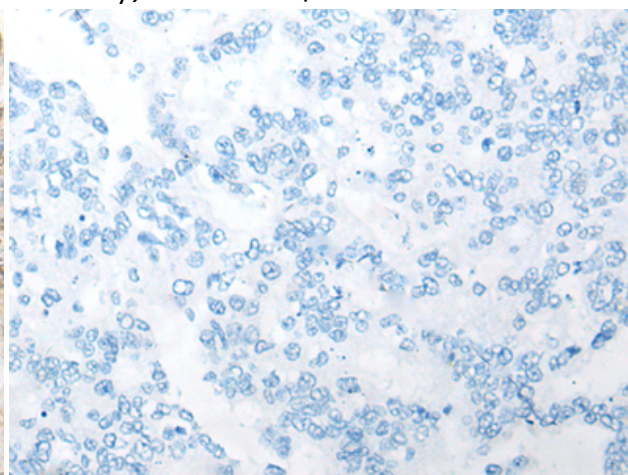
Immunohistochemistry analysis of paraffin embedded Human gastric cancer tissue using 215608 (CDX4 Antibody) at a dilution of 1/20 (Nucleus).



In comparison with the IHC on the left, the same paraffin-embedded Human gastric cancer tissue is first treated with the synthetic peptide and then with 215608 (Anti-CDX4 Antibody) at dilution 1/20.



The image on the left is immunohistochemistry of paraffin-embedded Human colorectal cancer tissue using 215608 (Anti-CDX4 Antibody) at a dilution of 1/20.



In comparison with the IHC on the left, the same paraffin-embedded Human colorectal cancer tissue is first treated with synthetic peptide and then with D163618 (Anti-CDX4 Antibody) at dilution 1/20.