

CDV3 RABBIT PAB

Cat.#: S221711

Product Name: Anti-CDV3 Rabbit Polyclonal Antibody

Synonyms: H41

UNIPROT ID: Q9UKY7 (Gene Accession - NP_060018)

Background: The CDV3 protein is a 258 amino acid protein that localizes in the cytoplasm. It acts as a repressor of Neu and subsequently may be involved in the progression of some cancers, including breast cancer, gliomas and prostate tumors.

Immunogen: Synthetic peptide of human CDV3

Applications: ELISA, IHC

Recommended Dilutions: IHC: 20-100; ELISA: 5000-10000

Host Species: Rabbit

Clonality: Rabbit Polyclonal

Isotype: Immunogen-specific rabbit IgG

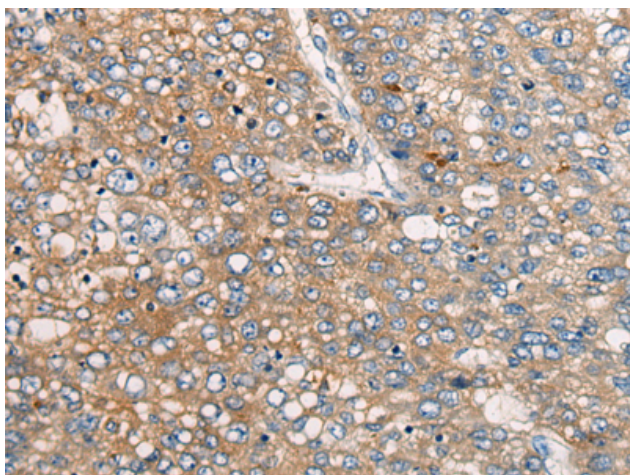
Purification: Antigen affinity purification

Species Reactivity: Human, Mouse

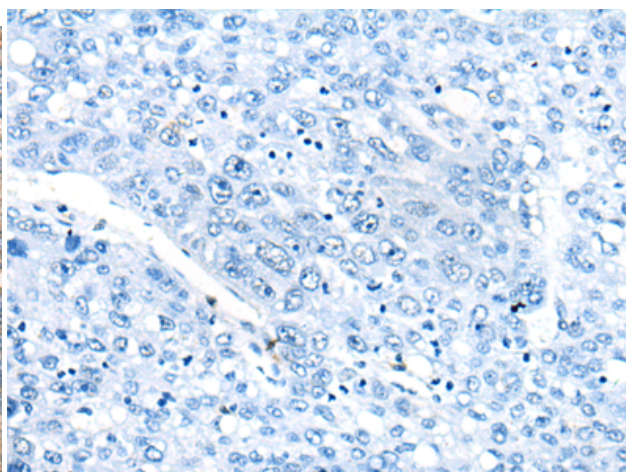
Constituents: PBS (without Mg²⁺ and Ca²⁺), pH 7.4, 150 mM NaCl, 0.05% Sodium Azide and 40% glycerol

Research Areas: Cell Biology

Storage & Shipping: Store at -20°C. Avoid repeated freezing and thawing



Immunohistochemistry analysis of paraffin embedded Human liver cancer tissue using 221711(CDV3 Antibody) at a dilution of 1/35(Cytoplasm).



In comparison with the IHC on the left, the same paraffin-embedded Human liver cancer tissue is first treated with the synthetic peptide and then with 221711(Anti-CDV3 Antibody) at dilution 1/35.