

CDT1 RABBIT PAB

Cat.#: N226004

Product Name: Anti-CDT1 Rabbit pAb

Synonyms: CDT 1; Chromatin licensing and DNA replication factor 1; Retroviral integration site 2; RIS2

UNIPROT ID: Q9H211

Background: Cooperates with CDC6 to promote the loading of the mini-chromosome maintenance complex onto chromatin to form the pre-replication complex necessary to initiate DNA replication. Binds DNA in a sequence-, strand-, and conformation-independent manner. Potential oncogene.

Immunogen: Recombinant protein of human CDT1

Applications: FC, ICC/IF, IP, WB

Recommended Dilutions: WB: 1/500-1/1000 IF: 1/50-1/200 IP: 1/20 FC: 1/50-1/100

Host Species: Rabbit

Clonality: Rabbit Polyclonal

Clone ID: -

MW: Calculated MW: 60 kDa; Observed MW: 65 kDa

Isotype: IgG

Purification: Affinity Purified

Species Reactivity: Human

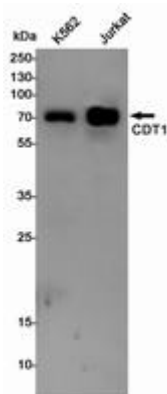
Conjugation: Unconjugated

Modification: Unmodified

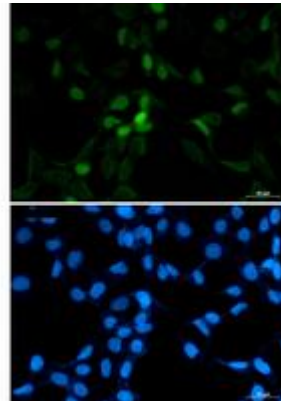
Constituents: PBS (without Mg²⁺ and Ca²⁺), pH 7.3 containing 50% glycerol, 0.5% BSA and 0.02% sodium azide

Research Areas: Epigenetics and Nuclear Signaling

Storage & Shipping: Store at -20°C. Avoid repeated freezing and thawing



Western blot analysis of CDT1 in K562, Jurkat lysates using CDT1 antibody.



Immunocytochemistry analysis of CDT1 (green) in 293T using CDT1 antibody, and DAPI (blue).