

CDRT15L2 RABBIT PAB

Cat.#: S221710

Product Name: Anti-CDRT15L2 Rabbit Polyclonal Antibody

Synonyms:

UNIPROT ID: A8MXV6 (Gene Accession - NP_001177719)

Background: The function of this protein remains unknown.

Immunogen: Synthetic peptide of human CDRT15L2

Applications: ELISA, IHC

Recommended Dilutions: IHC: 25-100; ELISA: 5000-10000

Host Species: Rabbit

Clonality: Rabbit Polyclonal

Isotype: Immunogen-specific rabbit IgG

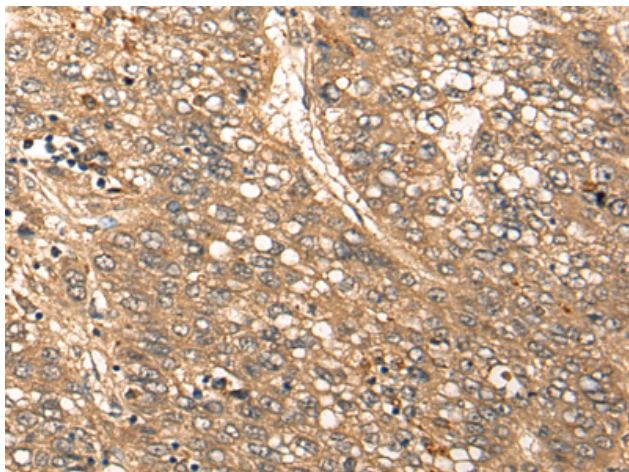
Purification: Antigen affinity purification

Species Reactivity: Human

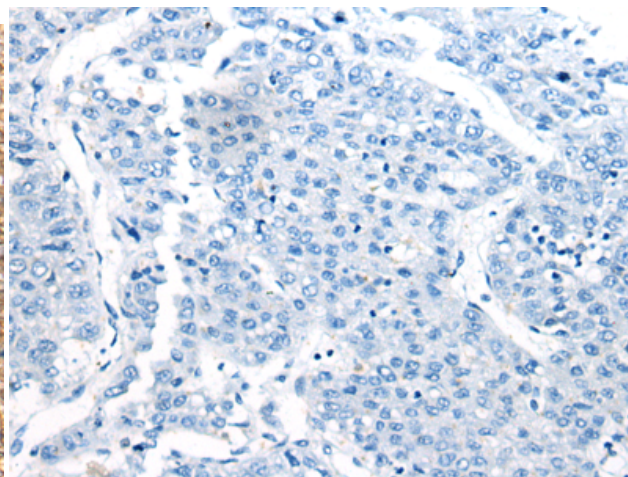
Constituents: PBS (without Mg²⁺ and Ca²⁺), pH 7.4, 150 mM NaCl, 0.05% Sodium Azide and 40% glycerol

Research Areas: Cell Biology

Storage & Shipping: Store at -20°C. Avoid repeated freezing and thawing



Immunohistochemistry analysis of paraffin embedded Human liver cancer tissue using 221710 (CDRT15L2 Antibody) at a dilution of 1/20 (Cell membrane).



In comparison with the IHC on the left, the same paraffin-embedded Human liver cancer tissue is first treated with the synthetic peptide and then with 221710 (Anti-CDRT15L2 Antibody) at dilution 1/20.