

CDK10 RABBIT PAB

Cat.#: S216412

Product Name: Anti-CDK10 Rabbit Polyclonal Antibody

Synonyms: ALSAS; PISSLRE

UNIPROT ID: Q15131 (Gene Accession - BC025301)

Background: The protein encoded by this gene belongs to the CDK subfamily of the Ser/Thr protein kinase family. The CDK subfamily members are highly similar to the gene products of *S. cerevisiae cdc28*, and *S. pombe cdc2*, and are known to be essential for cell cycle progression. This kinase has been shown to play a role in cellular proliferation and its function is limited to cell cycle G2-M phase. Multiple transcript variants encoding different isoforms have been found for this gene.

Immunogen: Fusion protein of human CDK10

Applications: ELISA, WB, IHC

Recommended Dilutions: IHC: 100-200;WB: 1000-5000;ELISA: 5000-10000

Host Species: Rabbit

Clonality: Rabbit Polyclonal

Isotype: Immunogen-specific rabbit IgG

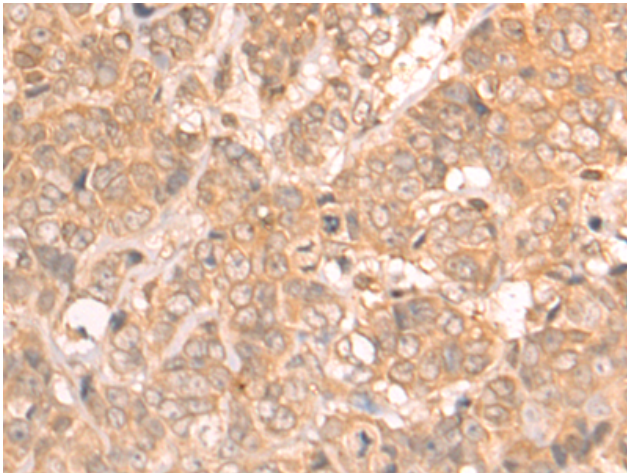
Purification: Antigen affinity purification

Species Reactivity: Human, Mouse, Rat

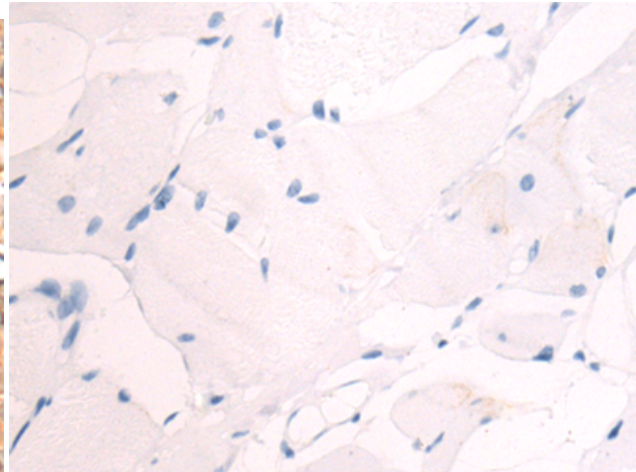
Constituents: PBS (without Mg²⁺ and Ca²⁺), pH 7.4, 150 mM NaCl, 0.05% Sodium Azide and 40% glycerol

Research Areas: Epigenetics and Nuclear Signaling, Cancer

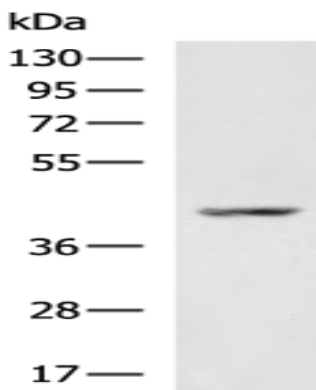
Storage & Shipping: Store at -20°C. Avoid repeated freezing and thawing



Immunohistochemistry analysis of paraffin embedded Human breast cancer tissue using 216412(CDK10 Antibody) at a dilution of 1/75(Cytoplasm).



In comparison with the IHC on the left, the same paraffin-embedded Human breast cancer tissue is first treated with the fusion protein and then with 216412(Anti-CDK10 Antibody) at dilution 1/75.



Gel: 8%SDS-PAGE, Lysate: 40 μ g;
Lane: Human small cell malignant tumors (lymphoma) tissue lysate;
Primary antibody: 216412(CDK10 Antibody) at dilution 1/1000;
Secondary antibody: HRP-conjugated Goat anti rabbit IgG at 1/5000 dilution;
Exposure time: 10 seconds