

## CDCP1 RABBIT PAB

**Cat.#:** S214236

**Product Name:** Anti-CDCP1 Rabbit Polyclonal Antibody

**Synonyms:** CD318; TRASK; SIMA135

**UNIPROT ID:** Q9H5V8 (Gene Accession - NP\_073753 )

**Background:** This gene encodes a transmembrane protein which contains three extracellular CUB domains and acts as a substrate for Src family kinases. The protein plays a role in the tyrosine phosphorylation-dependent regulation of cellular events that are involved in tumor invasion and metastasis. Alternative splicing results in multiple transcript variants of this gene.

**Immunogen:** Synthetic peptide of human CDCP1

**Applications:** ELISA, WB, IHC

**Recommended Dilutions:** IHC: 50-200;WB: 1000-5000;ELISA: 1000-5000

**Host Species:** Rabbit

**Clonality:** Rabbit Polyclonal

**Isotype:** Immunogen-specific rabbit IgG

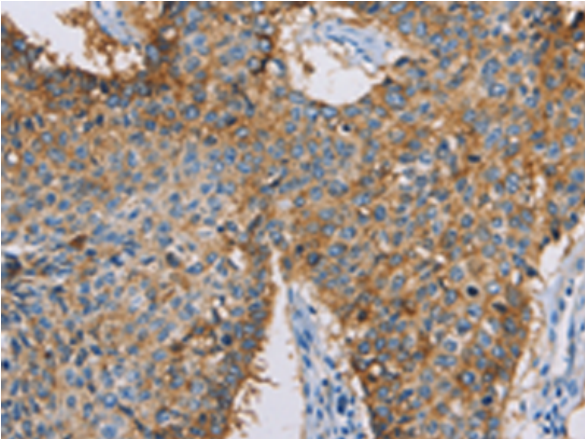
**Purification:** Antigen affinity purification

**Species Reactivity:** Human

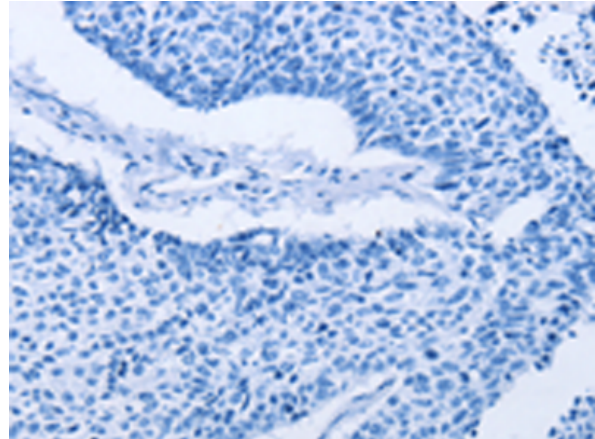
**Constituents:** PBS (without Mg<sup>2+</sup> and Ca<sup>2+</sup>), pH 7.4, 150 mM NaCl, 0.05% Sodium Azide and 40% glycerol

**Research Areas:** Signal Transduction, Cancer, Stem Cells

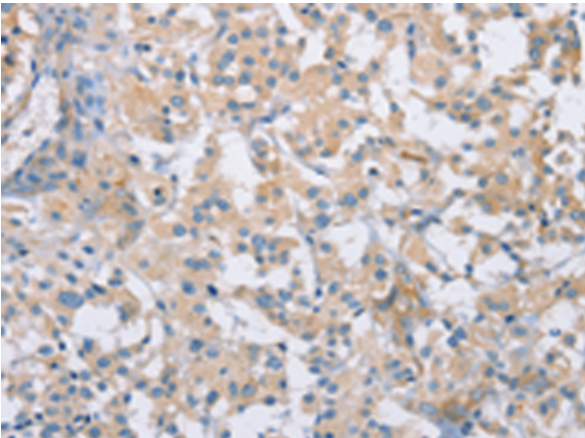
**Storage & Shipping:** Store at -20°C. Avoid repeated freezing and thawing



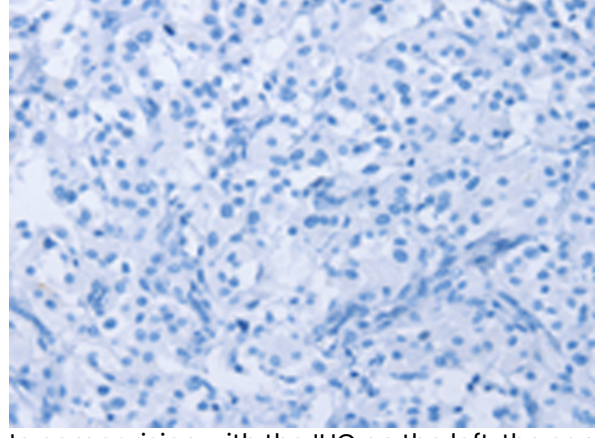
Immunohistochemistry analysis of paraffin embedded Human lung cancer tissue using 214236(CDCP1 Antibody) at a dilution of 1/50(Cytoplasm).



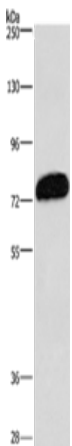
In comparison with the IHC on the left, the same paraffin-embedded Human lung cancer tissue is first treated with the synthetic peptide and then with 214236(Anti-CDCP1 Antibody) at dilution 1/50.



The image on the left is immunohistochemistry of paraffin-embedded Human thyroid cancer tissue using 214236(Anti-CDCP1 Antibody) at a dilution of 1/50.



In comparison with the IHC on the left, the same paraffin-embedded Human thyroid cancer tissue is first treated with synthetic peptide and then with D161549(Anti-CDCP1 Antibody) at dilution 1/50.



Gel: 6%SDS-PAGE, Lysate: 40 µg;  
Lane: PC3 cells;  
Primary antibody: 214236(CDCP1 Antibody) at dilution 1/1100;  
Secondary antibody: Goat anti rabbit IgG at 1/8000 dilution;  
Exposure time: 30 seconds



# Product Description

Pioneering GTPase and Oncogene Product Development since 2010

---