

CDC25C RABBIT PAB

Cat.#: N225270

Product Name: Anti-CDC25C Rabbit pAb

Synonyms: CDC25C; M-phase inducer phosphatase 3; Dual specificity phosphatase Cdc25C

UNIPROT ID: P30307

Background: Functions as a dosage-dependent inducer in mitotic control. It is a tyrosine protein phosphatase required for progression of the cell cycle. It directly dephosphorylates CDK1 and activate its kinase activity.

Immunogen: Peptide sequence around aa.214~218 (S-P-S-M-P) derived from Human cdc25C.

Applications: WB,IHC-P,ICC/IF

Recommended Dilutions: WB: 1/500-1/1000 IHC: 1/50-1/100 IF: 1/50-1/200

Host Species: Rabbit

Clonality: Rabbit Polyclonal

Clone ID: -

MW: Calculated MW: 53 kDa; Observed MW: 60 kDa

Isotype: IgG

Purification: Affinity Chromatography

Species Reactivity: Human

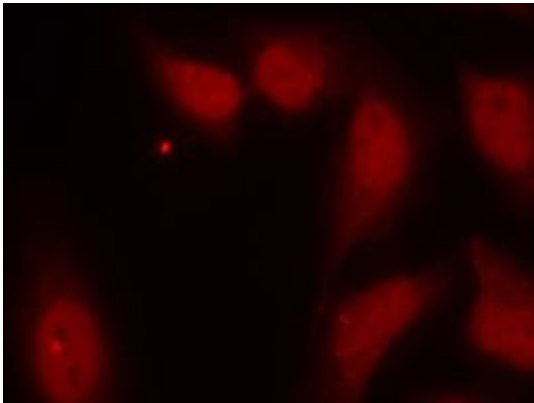
Conjugation: Unconjugated

Modification: Unmodified

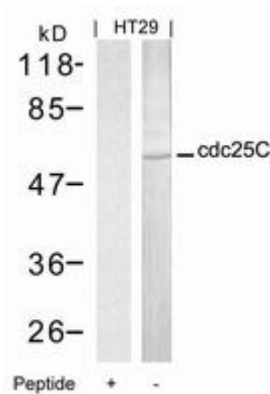
Constituents: PBS (without Mg²⁺ and Ca²⁺), pH 7.3 containing 50% glycerol, 0.5% BSA and 0.02% sodium azide

Research Areas: Cell Biology

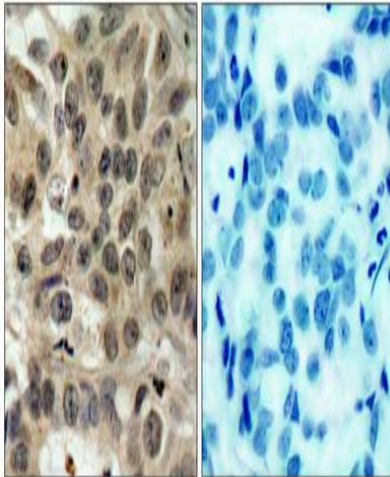
Storage & Shipping: Store at -20°C. Avoid repeated freezing and thawing



Immunofluorescence analysis of CDC25C in Hela using cdc25C (Ab216) antibody.



Western blot analysis of CDC25C in HT-29 lysates using cdc25C (Ab216) antibody.



Immunohistochemistry analysis of paraffin-embedded Human breast carcinoma tissue using cdc25C (Ab216) antibody (left) or the same antibody preincubated with blocking peptide (right). High-pressure and temperature Sodium Citrate pH 6.0 was used for antigen retrieval.