

CDC20B RABBIT PAB

Cat.#: S221704

Product Name: Anti-CDC20B Rabbit Polyclonal Antibody

Synonyms: G6VTS76519

UNIPROT ID: Q86Y33 (Gene Accession - NP_001163873)

Background: WD-repeats are motifs that are found in a variety of proteins and are characterized by a conserved core of 40-60 amino acids that commonly form a tertiary propeller structure. While proteins that contain WD-repeats participate in a wide range of cellular functions, they are generally involved in regulatory mechanisms concerning chromatin assembly, cell cycle control, signal transduction, RNA processing, apoptosis and vesicular trafficking. Cdc20B (cell division cycle 20 homolog B) is a 519 amino acid protein that contains seven WD repeats and is thought to play a role in cell cycle control. Multiple isoforms of Cdc20B exist due to alternative splicing events. The gene encoding Cdc20B maps to human chromosome 5, which contains 181 million base pairs and comprises nearly 6% of the human genome. Deletion of the p arm of chromosome 5 leads to Cri du chat syndrome, while deletion of the q arm or of chromosome 5 altogether is common in therapy-related acute myelogenous leukemias and myelodysplastic syndrome.

Immunogen: Synthetic peptide of human CDC20B

Applications: ELISA, IHC

Recommended Dilutions: IHC: 25-100; ELISA: 5000-10000

Host Species: Rabbit

Clonality: Rabbit Polyclonal

Isotype: Immunogen-specific rabbit IgG

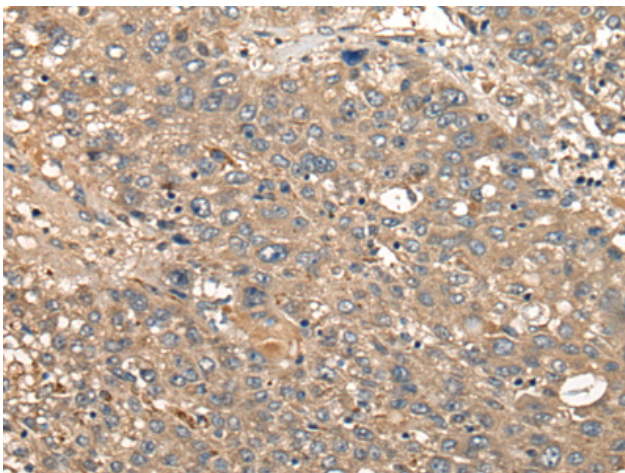
Purification: Antigen affinity purification

Species Reactivity: Human

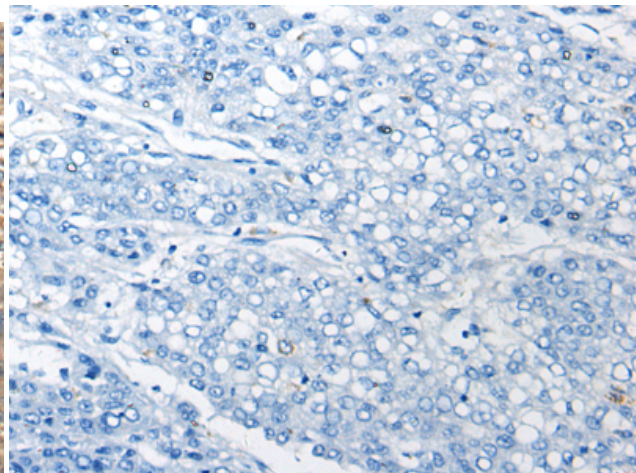
Constituents: PBS (without Mg²⁺ and Ca²⁺), pH 7.4, 150 mM NaCl, 0.05% Sodium Azide and 40% glycerol

Research Areas: Cancer

Storage & Shipping: Store at -20°C. Avoid repeated freezing and thawing



Immunohistochemistry analysis of paraffin embedded Human liver cancer tissue using 221704(CDC20B Antibody) at a dilution of 1/25(Cytoplasm).



In comparison with the IHC on the left, the same paraffin-embedded Human liver cancer tissue is first treated with the synthetic peptide and then with 221704(Anti-CDC20B Antibody) at dilution 1/25.



Product Description

Pioneering GTPase and Oncogene Product Development since 2010
